



SAFE LOUISVILLE

A COMPREHENSIVE
VIOLENCE REDUCTION PLAN

2025  2030



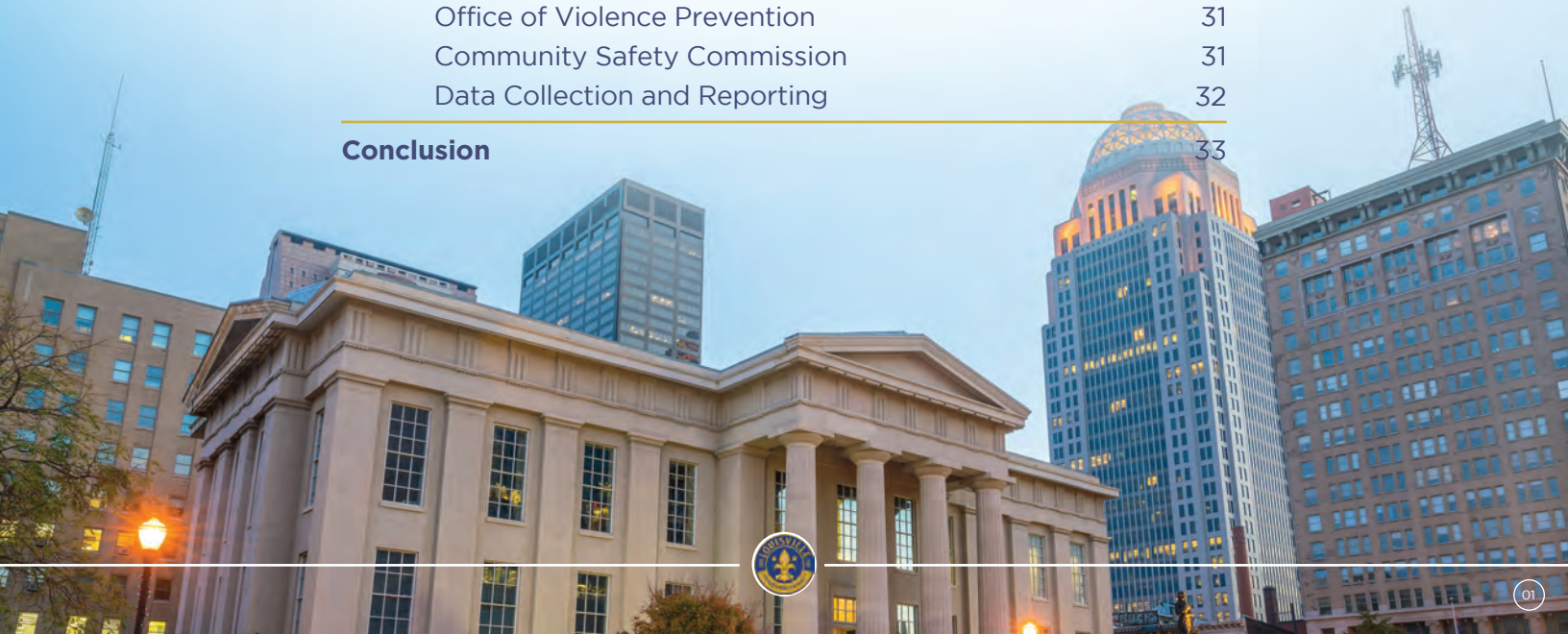


SAFE LOUISVILLE

A Comprehensive Violence Reduction Plan

TABLE OF CONTENTS

Letter from the Mayor	02
Executive Summary	03
The Problem	04-08
The COVID-Era Spike in Violence	04
The Demographics of Violence in Louisville	05-07
The Cost of Violence	08
SAFE LOUISVILLE	09
Prevention	10-19
Public Infrastructure	10-11
Youth Education and Activities	12-13
Economic Stability	14-15
Community Resource Connections	16
Community Trust in Police	17-18
Common Sense Gun Legislation	19
Intervention	20-24
Violence Intervention Initiatives	20-21
Conflict Resolution Alternatives	22
Trauma and Reentry Services	23-24
Enforcement	25-30
Law Enforcement Support	25-26
Public Order	27-28
State and Federal Partnerships	29
Justice System Transparency	30
Plan Implementation	31-32
Office of Violence Prevention	31
Community Safety Commission	31
Data Collection and Reporting	32
Conclusion	33





SAFE LOUISVILLE

A Comprehensive Violence Reduction Plan

LETTER FROM THE MAYOR

Dear Louisville,

I appreciate the opportunity to share our new Comprehensive Violence Reduction Plan with you. We're calling it **SAFE LOUISVILLE**, and it takes a new, coordinated, multi-faceted approach that has all city departments, federal partners, state agencies, and community organizations working together to prevent violent crime and protect public safety.

Public safety is my top priority. I want every Louisville family to have the opportunity to build a better, stronger future, and that takes more than just making improvements around the edges. My team and I are insisting on fundamental, lasting changes to continue reducing violent crimes in our community, because every member of our community should be safe and feel safe in their neighborhood and every Louisville neighborhood.

We have made progress, but we still have work to do, and this plan will serve as our roadmap to continue improving public safety. **SAFE LOUISVILLE** also highlights the partnerships we've developed with federal and state prosecutors to indict people who commit gun crimes and how we're transforming the culture of LMPD and providing the tools they need to be the most trained, trusted, and transparent police department in America. Plus, under the leadership of LMPD Chief Paul Humphrey and his new command staff, we are implementing a new crime strategy based on hard data and proven results to further reduce violent crime.

We are not doing this work in silos – we have all city departments and community organizations on board to increase educational and job opportunities, provide more affordable housing, reduce blight, and invest in traditionally underserved communities.

This is the work we are doing with you for the community we all love. Thank you for helping us build a safer, stronger, and healthier Louisville.

Sincerely,

Craig Greenberg
Louisville Mayor





SAFE LOUISVILLE

A Comprehensive Violence Reduction Plan

MAYOR CRAIG GREENBERG
Effective 2025 – 2030

THE VISION

Every Louisvillian lives free from violence and feels safe in their community.

THE PROBLEM

Violence is a complex issue that requires a comprehensive solution. It is intertwined with public health, public infrastructure, and the efficacy of the justice system. It is not a problem that can be addressed with any one strategy alone. Instead, it demands a collaborative and multifaceted solution—it calls on us to invest in underserved communities, to empower communities to lead the charge for change, to reach out to at-risk youth and individuals, and to ensure that those who engage in violence are quickly apprehended and face serious consequences for their actions. And we all must work together.

THE PLAN

SAFE LOUISVILLE is a comprehensive set of strategies and action items that address community safety from every angle. It incorporates and supplements LMPD's crime plan. The new Office of Violence Prevention and Community Safety Commission will play a key role in the implementation of this plan. Success will be, in the short-term, a reduction in gun violence and homicides by at least 15% per year; in the mid-term, improvement in the community's perception of safety and trust; and in the long-term, giving the next generation of Louisvillians the support they need to live lives free from violence.



SAFE LOUISVILLE HAS 3 PILLARS



Prevention

Combat root causes of violence; create conditions for peace

- Public infrastructure
- Youth education and activities
- Economic stability
- Community resource connections
- Community trust in police
- Common sense gun legislation



Intervention

Stop potential shooters before they act; stop the cycle of incarceration

- Violence intervention initiatives
- Conflict resolution alternatives
- Trauma and reentry services



Enforcement

Protect the public; hold offenders accountable

- Law enforcement support
- Public order
- State and federal partnerships
- Justice system transparency

Together we can make the meaningful progress this city deserves – a safer, stronger, and healthier Louisville.

View the full plan at
www.louisvilleky.gov/safelouisville

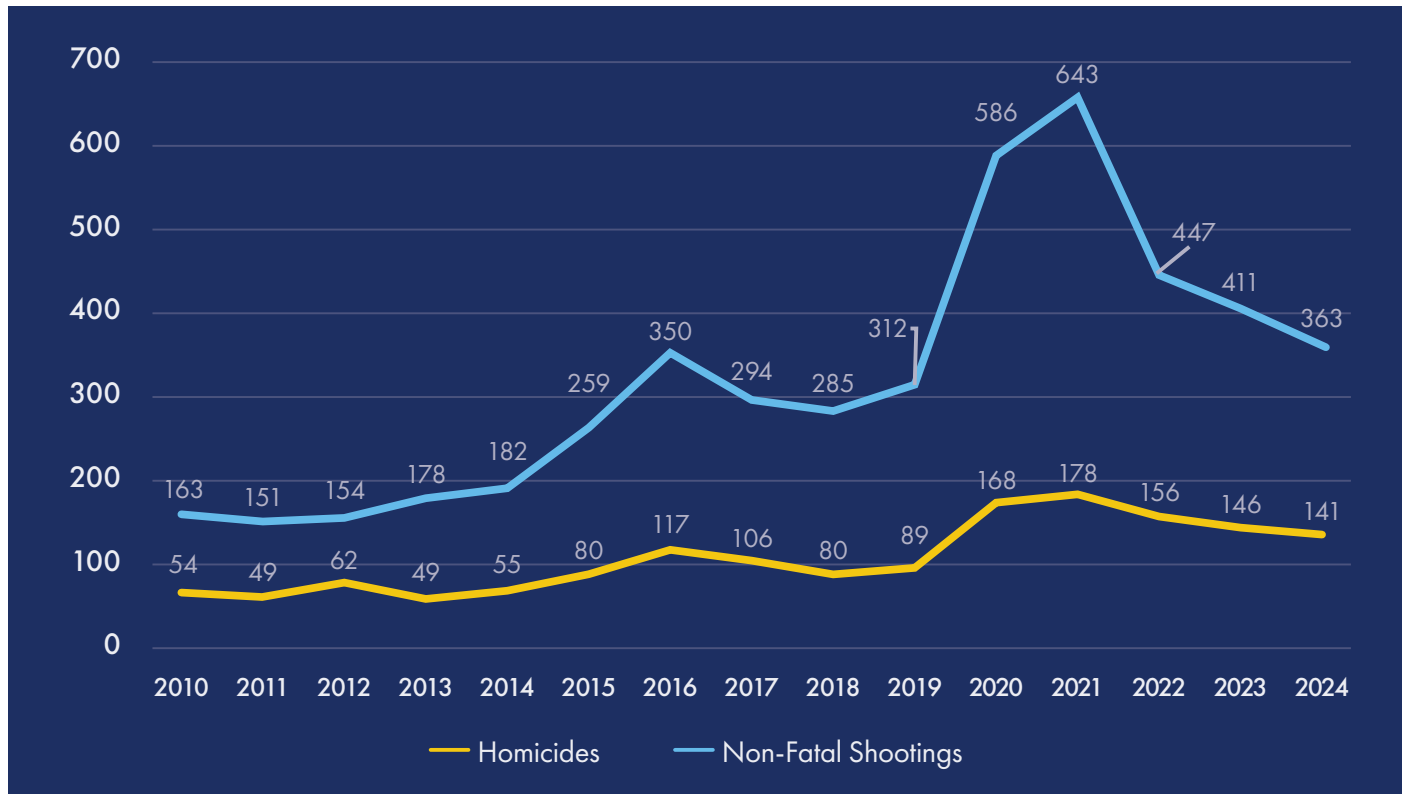




SAFE LOUISVILLE | THE PROBLEM

A Comprehensive Violence Reduction Plan 2025 - 2030

THE PROBLEM: THE COVID-ERA SPIKE IN VIOLENCE



During the COVID-19 pandemic, the United States experienced a spike in violent crime.¹ And at the forefront of the spike in violent crime was a spike in gun violence. Louisville was no different. In fact, in Louisville, gun violence began increasing years earlier—in 2015. This violence peaked in 2021 with 178 homicide victims (168 were shooting deaths) and 643 non-fatal shooting victims. Violent gun crime in Louisville has been steadily declining ever since. By 2024, homicides had decreased by 21% to 141 (132 involved guns), and non-fatal shootings had decreased by 44% to 363 victimizations.²

These are not random acts of violence. They are tied to interpersonal conflicts among individuals, groups, or gangs. Although the numbers are moving in the right direction, they remain far too high.

¹ FBI Releases 2020 Crime Statistics, FBI National Press Office (Sept. 27, 2021), available at <https://www.fbi.gov/news/press-releases/press-releases/fbi-releases-2020-crime-statistics>.

² This data was obtained from the Louisville Metro Police Department.





SAFE LOUISVILLE | THE PROBLEM

A Comprehensive Violence Reduction Plan | 2025 - 2030

THE PROBLEM: THE DEMOGRAPHICS OF VIOLENCE IN LOUISVILLE

In order to effectively address violence, it is crucial to understand its demographics. Violent crime in Louisville often involves guns. Violence disproportionately affects certain Louisvillians more than others. Violence is clustered in certain neighborhoods, primarily to the West of our city, and most shooting incidents involve young Black men between the ages of 18 and 34. About a third of shootings are connected to gang or group violence. The following statistics are from the Louisville Metro Police Department's 2024 crime data:

- 15% of shooting victims and 17% of known perpetrators were under 18 years old³
- 18% of shooting victims and 26% of known perpetrators were White
- 81% of shooting victims and 87% of known perpetrators were males, most commonly between the ages of 18 and 34
- 31% of shootings were gang or group violence related
- 74% of shooting victims and 73% of known perpetrators were Black
- Nearly 50% of shootings were in the West End, concentrated in the neighborhoods of Russell, Algonquin, Park Hill, California, Portland, and Shawnee

Violence in Louisville is largely concentrated in communities that also experience harm from historical and systemic inequities that perpetuate cycles of violence and prevent sustained improvement. These factors are commonly referred to as the "root causes" of crime. Communities disproportionately plagued by violence generally have more urban blight and higher percentages of the population living in poverty, without a high school degree, and unemployed. The following maps illustrate those correlations by overlaying 2024 non-fatal shootings and homicides over U.S. census data:⁴

³ "Known perpetrators" refers to individuals charged with crimes.

⁴ These maps use the U.S. Census Bureau's American Community Survey 2019-2023 5-year estimates and 2024 data on homicides and non-fatal shootings collected by Louisville Metro's Office of Violence Prevention (formerly the Office for Safe and Healthy Neighborhoods).

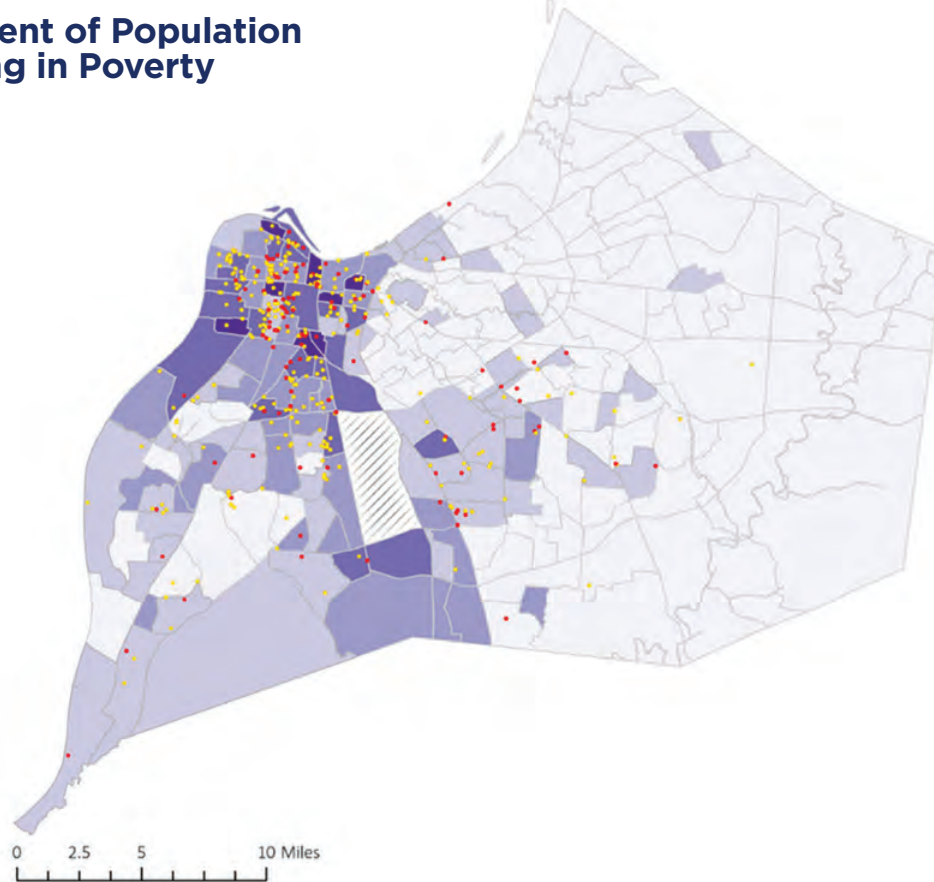




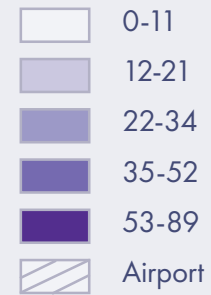
SAFE LOUISVILLE | THE PROBLEM

A Comprehensive Violence Reduction Plan 2025 - 2030

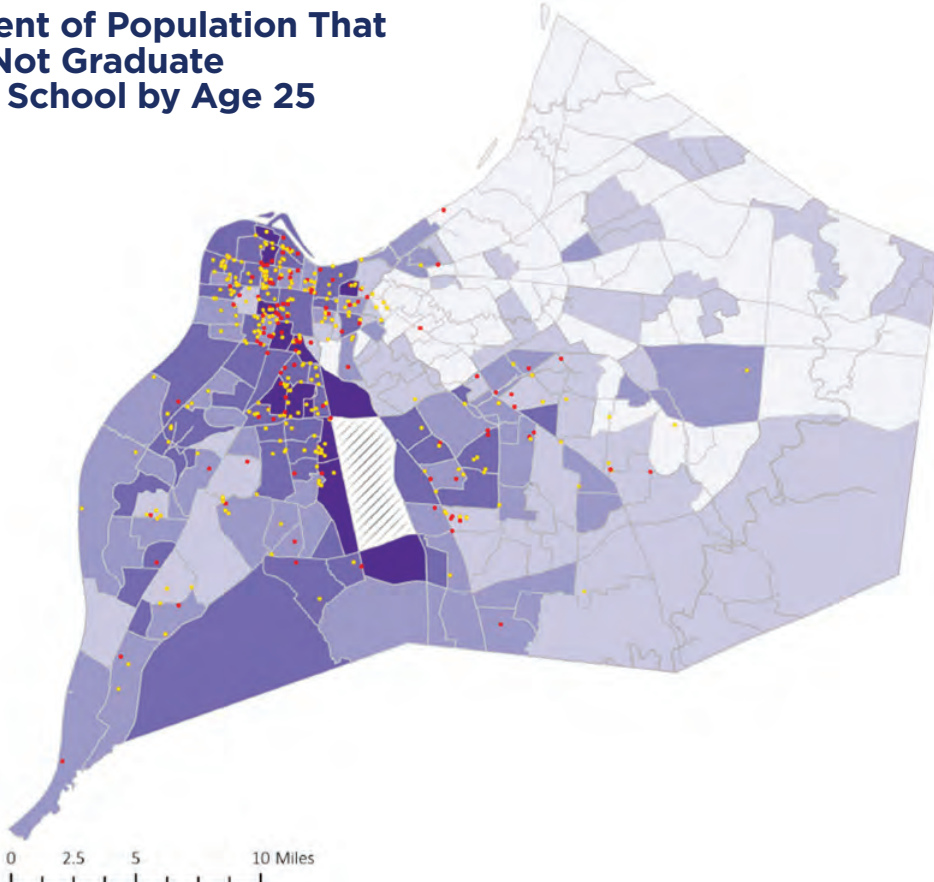
Percent of Population Living in Poverty



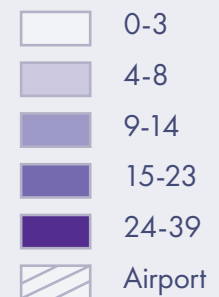
% Population Living Below Poverty Level



Percent of Population That Did Not Graduate High School by Age 25



% ≥ 25 y/o Attained Less Than High School

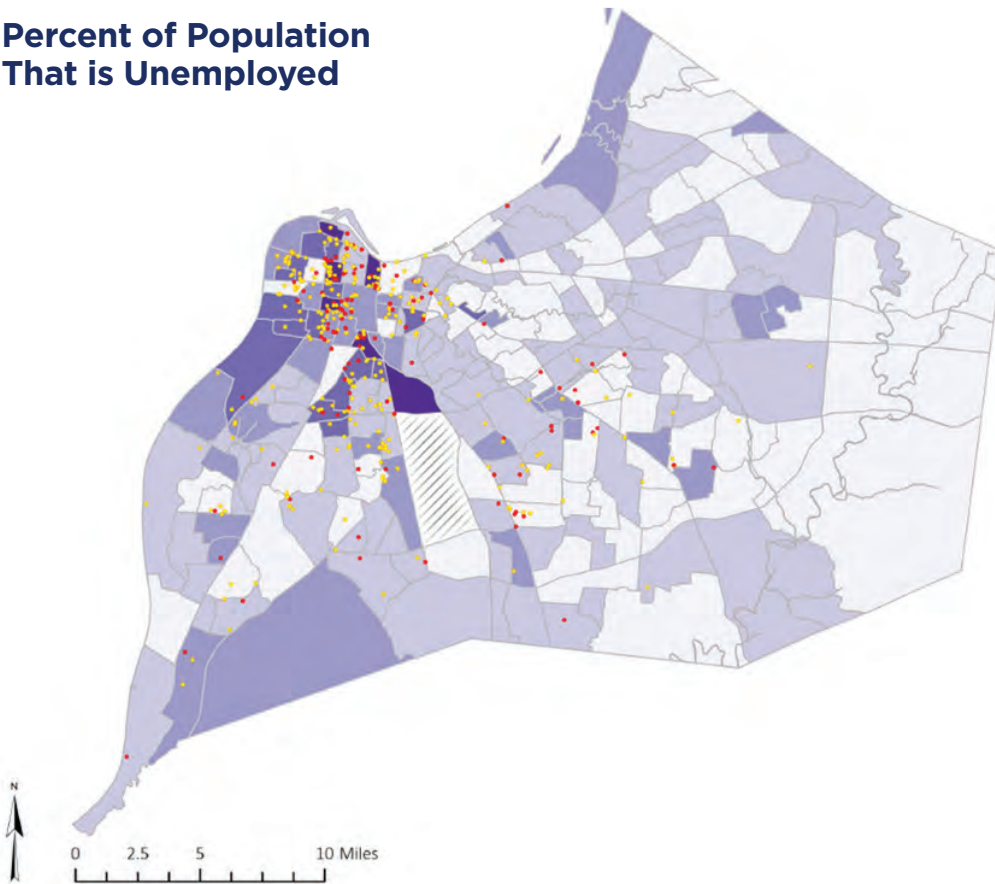




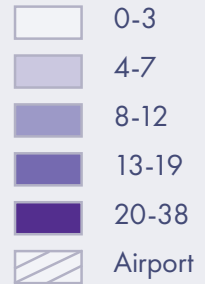
SAFE LOUISVILLE | THE PROBLEM

A Comprehensive Violence Reduction Plan | 2025 - 2030

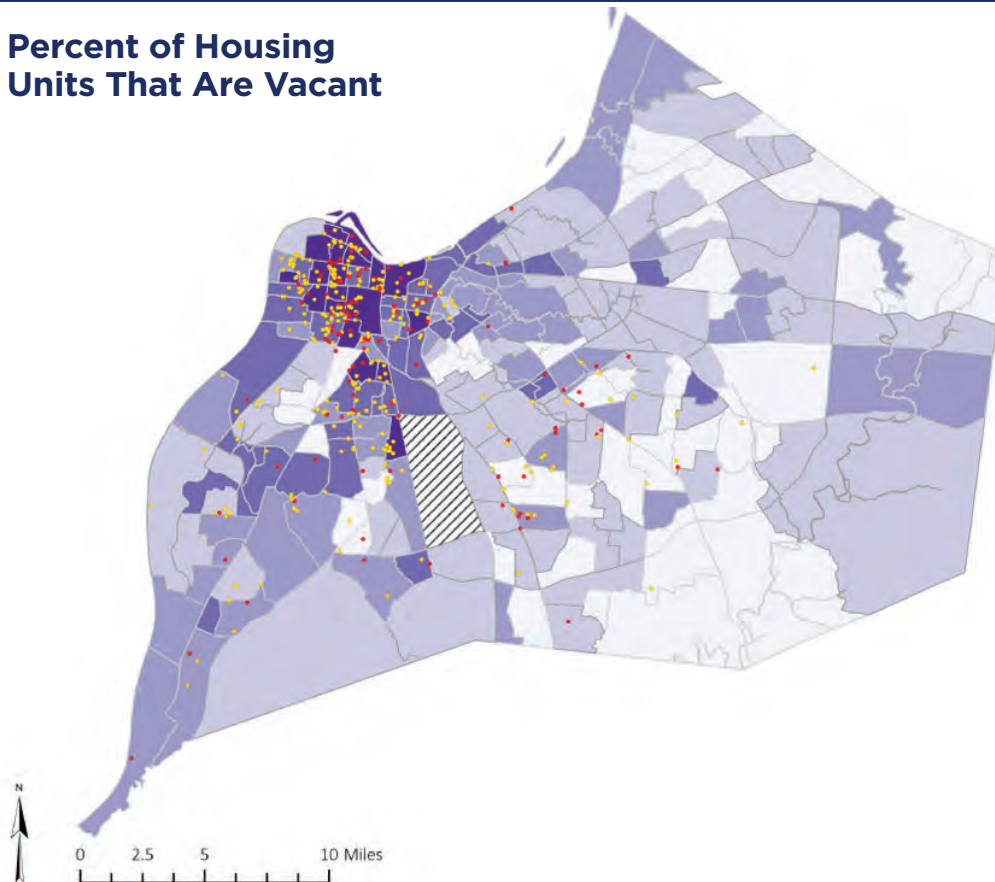
Percent of Population That is Unemployed



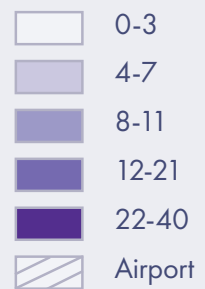
% Unemployed



Percent of Housing Units That Are Vacant



% of Vacant Housing Units





THE PROBLEM: THE COST OF VIOLENCE

In addition to the impact of violence on the victims, their families, and their communities, the economic burden on the city is significant. Costs include immediate expenses (hospital treatment, ambulances, police response), subsequent costs (long-term healthcare, lost earnings, criminal justice expenses), and quality-of-life impacts (pain and suffering). Violence affects businesses, property values, and the city's ability to attract investment and tourism. In Louisville, a fatal shooting is associated with an estimated cost of \$934,115, and a non-fatal shooting is estimated to cost \$508,897.⁵ The shootings in 2024 are expected to cost Louisville more than \$308 million. Addressing the economic impact of violence is crucial.

There is also a broader emotional cost to everyone, even those who do not personally have the trauma of living in a small community plagued with violence—the perception of safety. When parts of our city have persistent violence problems, it can make people feel less safe, even in the safest of areas. The perception of safety affects people's daily lives and can prevent people from benefitting from the myriad amenities and opportunities Louisville has to offer.



⁵ The Cost of Gun Violence, National Institute for Criminal Justice Reform, available at https://costofviolence.org/wp-content/uploads/2022/12/LouisvilleKY_v3.pdf.





SAFE LOUISVILLE

A Comprehensive Violence Reduction Plan

THE VISION: EVERY LOUISVILLIAN LIVES FREE FROM VIOLENCE AND FEELS SAFE IN THEIR COMMUNITY.

Violence is a complex issue that requires a comprehensive solution. It is intertwined with public health, public infrastructure, and the efficacy of the justice system. It is not a problem that can be addressed with any one strategy alone. Instead, it demands a collaborative and multifaceted solution—it calls on us to invest in underserved communities, to empower communities to lead the charge for change, to reach out to at-risk youth and individuals, and to ensure that those who engage in violence are quickly apprehended and face serious consequences for their actions. And we all must work together.

THE PLAN:

SAFE LOUISVILLE is a comprehensive set of strategies and action items that address community safety from every angle. It incorporates and supplements LMPD's crime plan. **SAFE LOUISVILLE** has three pillars:



Prevention includes strategies that create conditions for peace and combat root causes of violence. These strategies include investments in public infrastructure, youth education and activities, and economic stability through job creation and housing access. Prevention also includes strategies to connect community resources, build trust in our police through reform efforts, and advocate for common sense gun legislation.



Intervention includes strategies that stop violence before it happens by providing incentives, services, and opportunities to at-risk individuals. It also includes strategies to stop the cycle of violence and incarceration by providing conflict resolution alternatives to the criminal justice system, reentry services for people who have been incarcerated, and resources for communities who experience the trauma of violence.



Enforcement includes strategies to protect the public and hold offenders accountable by supporting our police, promoting public order, improving police efficacy in the apprehension of offenders, leveraging partnerships with state and federal partners, and promoting fair and equitable sentences for gun offenders and violent offenders.





SAFE LOUISVILLE | PREVENTION

A Comprehensive Violence Reduction Plan | 2025 - 2030

PREVENTION:

Goal: Create conditions for peace. Equip families, especially youth, with the tools they need to succeed and live free from violence.

Strategy: To prevent crime and create conditions for peace, Mayor Greenberg's Administration will promote community health and well-being by prioritizing addressing the root causes of crime.⁶ We will focus on increasing access to education, community amenities, jobs, and affordable housing for historically disadvantaged neighborhoods, with a special focus on youth. We will also prioritize eradicating blight and conditions that facilitate crime in the areas of our city that data analysis suggests need it most. We will work to increase communication and coordination between community organizations. We will work with LMPD to implement reforms to build trust and positive relationships with the communities they serve and protect. And we will support common sense legislation to get guns off of our streets.

Action Items:

1

ENHANCE COMMUNITY SPACES AND PUBLIC INFRASTRUCTURE IN OUR UNDERSERVED COMMUNITIES

- Invest in and reimagine public amenities such as parks, pools, and streetscapes to enhance residents' quality of life, encourage community pride, and bolster neighborhoods' social capital
- Eradicate blight, prioritizing communities that need it most
- Shut down businesses and conditions that promote or enable crime



Spotlight: Sustained Focus Improvement (SFI)

SFI is a strategy co-led by LMPD and the Mayor's Office that brings together city resources to prioritize certain areas of our city due to their disproportionate share of the city's crime. In addition to increased police visibility and investigative resources, agencies government-wide are providing blight eradication and structural improvements such as street lighting repair, graffiti removal, green space improvements, infrastructure improvements, vacant property boarding, vacant lot clean-up, code enforcement, trash removal, and abandoned vehicle removal. For more information, see louisville-police.org/948/Crime-Plan.

⁶"Crime and Violence, Social Determinants of Health Literature Summary," U.S. Dept. of Health & Human Serv., Office of Disease Prevention & Health Promotion (collecting studies), available at <https://odphp.health.gov/healthypeople/priority-areas/social-determinants-health/literature-summaries/crime-and-violence>; Hannah Love, "Want To Reduce Violence? Invest In Place," The Brookings Institution (Nov. 16, 2021).





1 ENHANCE COMMUNITY SPACES AND PUBLIC INFRASTRUCTURE IN OUR UNDERSERVED COMMUNITIES (Continued)



Spotlight: Alberta O. Jones Park

In November 2023, the new Alberta O. Jones Park opened in the California neighborhood. It boasts a state-of-the-art, music-themed playground, walking spaces with fitness stations, a lawn, picnic shelters and grills, a garden, and free wi-fi. In the future, it will include sports courts, fields, a community farm, and an event space. This, along with the Algonquin Park swimming pool, Ballard Park improvements, and the Chickasaw Park enhancements, are just a few of the park projects currently in progress.





SAFE LOUISVILLE | PREVENTION

A Comprehensive Violence Reduction Plan | 2025 - 2030

2

INCREASE ACCESS TO EDUCATION AND ACTIVITIES FOR YOUTH

- 🌱 Promote access to free, quality early childhood education to set kids up for success and to give parents the opportunity to work outside the home
- 🌱 Expand access to libraries and community centers by reopening them, remodeling them, and expanding their hours
- 🌱 Partner with Jefferson County Public Schools on initiatives to increase attendance, increase graduation rates, and reduce violence in schools
- 🌱 Partner with community organizations and Louisville's business leaders to promote city events, provide after-school activities, offer summer learning opportunities, and create jobs for young people



Spotlight: Thrive by 5

In 2024, the Mayor launched Thrive by 5, a roadmap to provide free quality early childhood learning opportunities to Louisville families who need it. A new nonprofit was created to manage the program, which will get more 3- and 4-year-olds access to early childhood education by investing in Louisville's childcare centers, teacher recruitment, and tuition support for families. For more information, see thriveby5louisville.com.



Spotlight: Parkland Library

In February 2025, the new and improved Parkland Library reopened after decades of closure. This is just part of a \$44 million investment allocated by Mayor Greenberg and supplemented by private donations to renovate and reopen four libraries across our city; the Parkland, Portland, and Main libraries have been or are in the process of being renovated, and the new Fern Creek library will be opening soon. These libraries will serve as community resources where residents young and old can come together, learn, and grow.





2 INCREASE ACCESS TO EDUCATION AND ACTIVITIES FOR YOUTH (Continued)



Spotlight: Summer Works

This summer, Metro is again partnering with KentuckianaWorks, Blueprint 502, private donors, and private sector partners to offer SummerWorks, a program that matches youth ages 16 to 21 with quality work opportunities and connects them to resources they need to be successful. Last summer, a record 3,400 youth registered on the SummerWorks program's online jobs platform, and we look forward to similar engagement this summer. For more information, see summerworks.org.





SAFE LOUISVILLE | PREVENTION

A Comprehensive Violence Reduction Plan | 2025 - 2030

3

INCREASE ECONOMIC STABILITY IN OUR UNDERSERVED COMMUNITIES

- ✿ Attract good-paying jobs to Louisville, with a particular focus on Louisville's underemployed neighborhoods to give opportunities to residents close to home
- ✿ Increase access to affordable housing by advocating for code revisions that increase building capacity, investing in housing initiatives, and forgiving liens on vacant homes to make them available sooner, and by providing down payment assistance to low- to moderate-income homebuyers
- ✿ Collaborate with the Louisville Metro Housing Authority and community organizations to revitalize and reimagine public and low-income housing properties



Spotlight: New West End Employers

In 2024, Stellar Snacks, a vegan snacks producer, and MMY U.S., an advanced modular construction facility, chose to locate in Louisville's West End, bringing many good-paying jobs to those neighborhoods. Also in 2024, the Norton West Louisville Hospital opened, as did a brand new Goodwill Opportunity Center, bringing even more jobs to our West End, along with much needed services. In total, in 2024, Mayor Greenberg's Administration created 4,571 new jobs in Louisville – the most created in a single year since 2017.



Spotlight: My Louisville Home

My Louisville Home, Mayor Greenberg's comprehensive affordable housing plan, has invested more than \$72 million to create and preserve affordable housing, adding about 4,800 units of affordable housing, with thousands more to come. For more information, see louisvilleky.gov/government/housing/my-louisville-home-comprehensive-housing-strategy.





SAFE LOUISVILLE | PREVENTION

A Comprehensive Violence Reduction Plan | 2025 - 2030

3 INCREASE ECONOMIC STABILITY IN OUR UNDERSERVED COMMUNITIES (Continued)



Spotlight: Community Care Campus

Mayor Greenberg's Administration is partnering with Volunteers of America Mid-States to develop and manage the Community Care Campus, a central location on four acres in Smoketown where unhoused individuals will be able to access a variety of services, including a family shelter, permanent affordable housing, and more. Demolition on the site has begun, and a temporary emergency family shelter is open. For more information, see voamid.org/community-care-campus.





4

COLLECT AND CONNECT COMMUNITY RESOURCES

- ✿ Develop and maintain a city-wide map of community organizations providing supportive services that help prevent violence, such as mental health and counseling services, addiction services, after school programming, education, and resources for food and shelter
- ✿ Increase connections and promote communications and partnerships among the ecosystem of community organizations working to prevent gun violence
- ✿ Invest in community-led efforts



Spotlight: Gun Violence Reduction Summits

In 2023 and 2024, the Office for Safe and Healthy Neighborhoods (now the Office of Violence Prevention), in partnership with Interfaith Paths to Peace and Citizens of Louisville Organized and United Together, hosted summits to bring together organizations comprising the ecosystem of gun violence prevention efforts across Louisville and create opportunities for connection and collaboration. Representatives from more than 200 community and government organizations participated. Going forward, the city will take the lead on ensuring that these organizations remain connected; it will dedicate resources to help maximize efforts, avoid redundancies, and identify opportunities for collaboration.



Spotlight: Investment in Community Organizations

Mayor Greenberg's Administration has allocated approximately \$33,793,977 to community-led initiatives to combat violence, ranging from national organizations to local nonprofits. For fiscal year 2025-26, Mayor Greenberg will propose a budget that includes opportunities for community organizations to collaborate to serve neighborhoods hardest hit by violence. For a list of organizations and initiatives that received funds, see Appendix A.



SAFE LOUISVILLE | PREVENTION

A Comprehensive Violence Reduction Plan | 2025 - 2030

5

BUILD COMMUNITY TRUST IN POLICE

- 🌟 Increase visibility of police in Sustained Focus Improvement areas and promote programs that foster positive, trusting relationships between the community and police
- 🌟 Implement police reform to ensure constitutional practices and rebuild trust between law enforcement and our community

Spotlight: Police Reform

In December 2024, Mayor Greenberg signed an historic consent decree that sets an aggressive timeline for continued police reform. Regardless of whether a court enters that decree, Mayor Greenberg and LMPD are committed to reform efforts described in the decree, which will be overseen by an independent monitor. Reforms have been underway for over two years and include:

- Revising 266 police policies to enhance accountability, transparency, and effectiveness in policing;
- Restructuring the department's organization, leadership, and personnel;
- Creating the Accountability and Improvement Bureau to, among other things, better investigate allegations of misconduct and provide revised and supplemental training, including use of force and crisis intervention training, to officers;
- Creating the Force Investigations Review Unit, a specialized team of commanding officers and legal professionals dedicated to reviewing use-of-force incidents for compliance with policy and law; and
- Using new software to identify areas for improvement and detect any disparities in enforcement actions.



In September 2024, Mayor Greenberg appointed Paul L. Humphrey as the new Chief to lead the transformation of LMPD. Since then, LMPD continues to implement reforms.

LMPD has also formally adopted evidence-based policing, as described in its crime plan. And in January 2025, LMPD announced a first-of-its-kind public safety project funded by a grant from the U.S. Department of Justice. Over the course of two years, a research team led by the Ohio State University will be embedded in LMPD. They will study and evaluate LMPD's Accountability and Improvement Bureau, focusing on LMPD's policy, training, accountability, and supervision reforms being implemented throughout the department.





SAFE LOUISVILLE | PREVENTION

A Comprehensive Violence Reduction Plan | 2025 - 2030

5

BUILD COMMUNITY TRUST IN POLICE (Continued)



Spotlight: LMPD Community Engagement

LMPD, through its Community Engagement Unit, is endeavoring to foster positive relationships and experiences between community members and police through programs such as Youth Chats with the LMPD, LMPD Youth Advisory Council, Meet Your Beat, Coffee with a Cop, Conversations and Cuts, and the Police Activities League, which brings together kids, officers, and communities through a variety of activities, camps, clubs, and sports. Each positive interaction between officers and the communities they serve is a step toward greater trust and understanding. Mayor Greenberg's Administration will prioritize finding even more opportunities for communities to get to know the police who protect them.





6

ADVOCATE FOR COMMON SENSE GUN LEGISLATION TO KEEP ILLEGAL GUNS OFF THE STREET AND OUT OF THE HANDS OF CHILDREN, SUCH AS LEGISLATION THAT:

- ✿ Bans assault weapons;
- ✿ Bans “switch” devices that convert handguns into automatic weapons;
- ✿ Requires young gun owners to have permits to carry concealed firearms;
- ✿ Requires a waiting period for a new gun owner;
- ✿ Empowers families to initiate proceedings to temporarily remove guns from a family member in a mental health crisis (Red Flag Laws);
- ✿ Establishes civil liability against a person legally responsible for a minor if the minor uses the guardian’s gun to shoot someone;
- ✿ Requires guns to be securely stored;
- ✿ Prohibits domestic abusers from possessing firearms; and
- ✿ Requires guns that were used in a crime to be destroyed.





INTERVENTION:

Goal: Stop violence before it happens. Stop the cycle of incarceration. Help those at the highest risk of becoming shooters make the choice not to shoot.

Strategy: To intervene in the cycle of violence, Mayor Greenberg's Administration will use various violence intervention initiatives to identify people who are at high risk of becoming gun violence victims or perpetrators—especially those involved in gangs and other violent groups—and provide incentives, resources, and tools to change behavior, as well as conflict mediation alternatives.⁷ Mayor Greenberg's Administration will help address the trauma that violence inflicts on communities and victims and provide reentry resources to those who have been incarcerated to help enable them to become productive, law-abiding members of our community and stop the cycle of incarceration.

Action Items:

1 USE VIOLENCE INTERVENTION INITIATIVES TO STOP POTENTIAL SHOOTERS BEFORE THEY ACT

- Promote partnerships between police, government agencies, and social services providers to intervene in the cycle of gang and group violence by providing a way out and incentives to change
- Use community violence intervention strategies to identify at-risk individuals and intervene in group violence independent of law enforcement
- Partner with UofL Hospital Trauma Center to build relationships with and offer services to shooting victims and their families



Spotlight: Group Violence Intervention (GVI)

GVI is a collaborative, focused deterrence strategy involving police, government, and trusted and/or faith-based community members. People at risk of group gun violence are identified and, either by themselves or with their group, are given a message of hope for change, access to resources and social services, and a warning that future gun crimes will be met with swift and certain consequences for all group members. In 2024, GVI delivered this message to 178 people at risk of gun violence. In 2025, GVI is undergoing process improvements that will promote coordination and data tracking, and ensure that the consequences are in fact swift and certain.

⁷ Community violence intervention and interruption models, and focused deterrence models, have proven effective in cities across the United States. See generally Johns Hopkins Bloomberg School of Public Health, Center for Gun Violence Solutions, available at publichealth.jhu.edu/center-for-gun-violence-solutions/solutions/community-violence-intervention.



1 USE VIOLENCE INTERVENTION INITIATIVES TO STOP POTENTIAL SHOOTERS BEFORE THEY ACT (Continued)



Spotlight: Pivot to Peace

Pivot to Peace is a community violence intervention model. It is a fresh start for, and reimagining of, the city's community-based crime intervention programming. As deployed in the fall of 2024, the Office of Violence Prevention (formerly OSHN) is partnering with Goodwill, Volunteers of America Mid-States, the Center for Neighborhoods, and UofL Hospital. Pivot to Peace focuses on using trained violence interventionists with credibility in the community to influence the behavior and thinking of those most at risk for gun violence. In the Russell, Park Hill, Algonquin, Taylor Berry, and Newburg neighborhoods, interventionists engage and build trust with individuals at high risk for gun violence through consistent outreach and real-time, street-level interventions focused on de-escalation and conflict resolution. The program also connects those who are ready and willing to make a change and their families to resources and essential services, along with short-term and long-term case management.





2

PROVIDE CONFLICT RESOLUTION ALTERNATIVES TO THE JUSTICE SYSTEM

- When it can be done safely, deploy mental health services providers to assist those in mental health crises rather than police
- Partner with Volunteers of America Mid-States to promote restorative justice, giving victims the option to address the harm they've experienced by negotiating a resolution with juvenile offenders outside of traditional systems
- Encourage diversion programs and resolutions, particularly for people with mental health issues



Spotlight: Deflection

In the Crisis Call Diversion Program, also known as Deflection, 911 call operators direct certain calls from people in mental health crises to the Behavioral Health Hub at MetroSafe, where trained crisis triage workers take the call and, if needed, dispatch a Mobile Crisis Response Team consisting of Seven Counties mental health professionals, instead of police. In June 2024, the city expanded the hours to 24/7, and in February 2025, the city expanded the geographic coverage to all of Jefferson County's suburban cities. In January and February 2025, crisis triage workers handled over 600 calls that police would have otherwise had to address. Overall, Mobile Crisis Response Teams have been dispatched to help people in crisis over 1,000 times.



Spotlight: Restorative Justice

Mayor Greenberg contributed approximately \$1.3 million of his budget to expand the efforts of Volunteers of America Mid-States' Restorative Justice Program. This program is an alternative for juvenile offenders. If all participants agree, the juvenile offender, victim, and trained counselors come together and focus on making amends, repairing harm, and building brighter futures. Young people who participate are less likely to commit a future offense, and victims of crimes report they feel closure and healing from being fully engaged in the discussion.



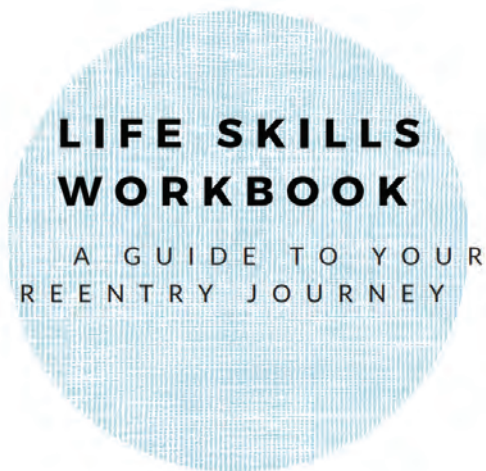
3 ADDRESS CONSEQUENCES OF VIOLENCE BY PROVIDING TRAUMA AND REENTRY SERVICES

- ✿ Provide trauma services to victims of violence and to communities who witness and deal with the aftermath of gun violence and community destabilization
- ✿ Provide robust reentry resources for offenders who have served their time by incentivizing second-chance employers and providing social services



Spotlight: Community Sanctuary Project

After a high-profile gun violence incident, the Community Sanctuary Project, which is coordinated by the Office of Violence Prevention (formerly OSHN), designates a faith organization to open as a community sanctuary. This serves as a place for residents of all backgrounds to gather, offer and receive support, and access services. This approach helps individuals and communities cope with the trauma of gun violence and provides a safe place where collective healing can begin.



Spotlight: Reentry Life Skills Workbook

The Louisville Metro Criminal Justice Commission, through its Opportunity Network, developed the Life Skills Workbook, which is used across Kentucky as a guide for people who have been incarcerated and are reentering society. It provides guidance regarding obtaining identification documents and how to navigate transportation, housing, finances, employment, education and training, managing one's criminal record, lifestyle, parenting, health and wellness, and more. In April 2025, the Opportunity Network will launch a companion website, which will help make this guidance more widely accessible for all people who need it.



SAFE LOUISVILLE | INTERVENTION

A Comprehensive Violence Reduction Plan | 2025 - 2030

3

ADDRESS CONSEQUENCES OF VIOLENCE BY PROVIDING TRAUMA AND REENTRY SERVICES (Continued)



Spotlight: Louisville Metro Department of Corrections (LMDC) Mental Health Services

Through partnerships with organizations such as Goodwill, Volunteers of America Mid-States, Spalding University, Bridgehaven, and NAMI Louisville, LMDC has expanded mental health treatment and life skills training for incarcerated individuals. LMDC also has its own discharge and reentry planning program where a team of social workers assist with reinstating medical insurance, housing, and treatment placements. It also provides essential supplies and follow-up care with individuals for up to six months for any needed ongoing support. In addition, LMDC partners with the Department of Transportation to provide IDs free of charge to help ensure that individuals can access future services.





ENFORCEMENT:

Goal: Protect the public and hold offenders accountable for their crimes.

Strategy: To protect the public and hold offenders accountable, Mayor Greenberg's Administration will support our police, giving them the tools they need for effective law enforcement. We will promote recruitment and retention of qualified, professional officers with pay increases and by taking care of our first responders. We will improve police efficacy by using data-responsive policing and by investing in technological innovations. This will lead to better policing, better apprehension rates, better conviction rates, and more certain consequences for offenders. We will also leverage our partnerships with state and federal partners to increase our capacity to combat gun violence. We will promote transparency in our justice system and improvements to the process, including helping ensure that judges who make pretrial detention and sentencing decisions have the information they need, that the public has better information to evaluate the judicial process, and that we keep our juveniles who are detained closer to home. We will also promote public order to ensure that all Louisvillians can enjoy our city.

Action Items:

1

GIVE OUR POLICE THE SUPPORT THEY NEED TO PROTECT OUR COMMUNITIES

- 🌿 Raise officer pay to help recruit and retain qualified, professional police officers
- 🌿 Take care of our first responders' mental and physical health
- 🌿 Use data-responsive policing to allocate police resources where they are needed most
- 🌿 Invest in technological innovations to increase efficiency and evidence collection



Spotlight: Data Responsive Policing

Data Responsive Policing is a decision-making strategy based on recent crime trends. Under LMPD's 2025 crime plan, LMPD is using continuously updated data to pinpoint locations and times most prone to violence and allocate police resources accordingly, increasing the deterrent value of police presence as well as the productivity of investigations. Resources and patrols are transferred to new micro-locations as they emerge from ongoing data reviews.



SAFE LOUISVILLE | ENFORCEMENT

A Comprehensive Violence Reduction Plan | 2025 - 2030

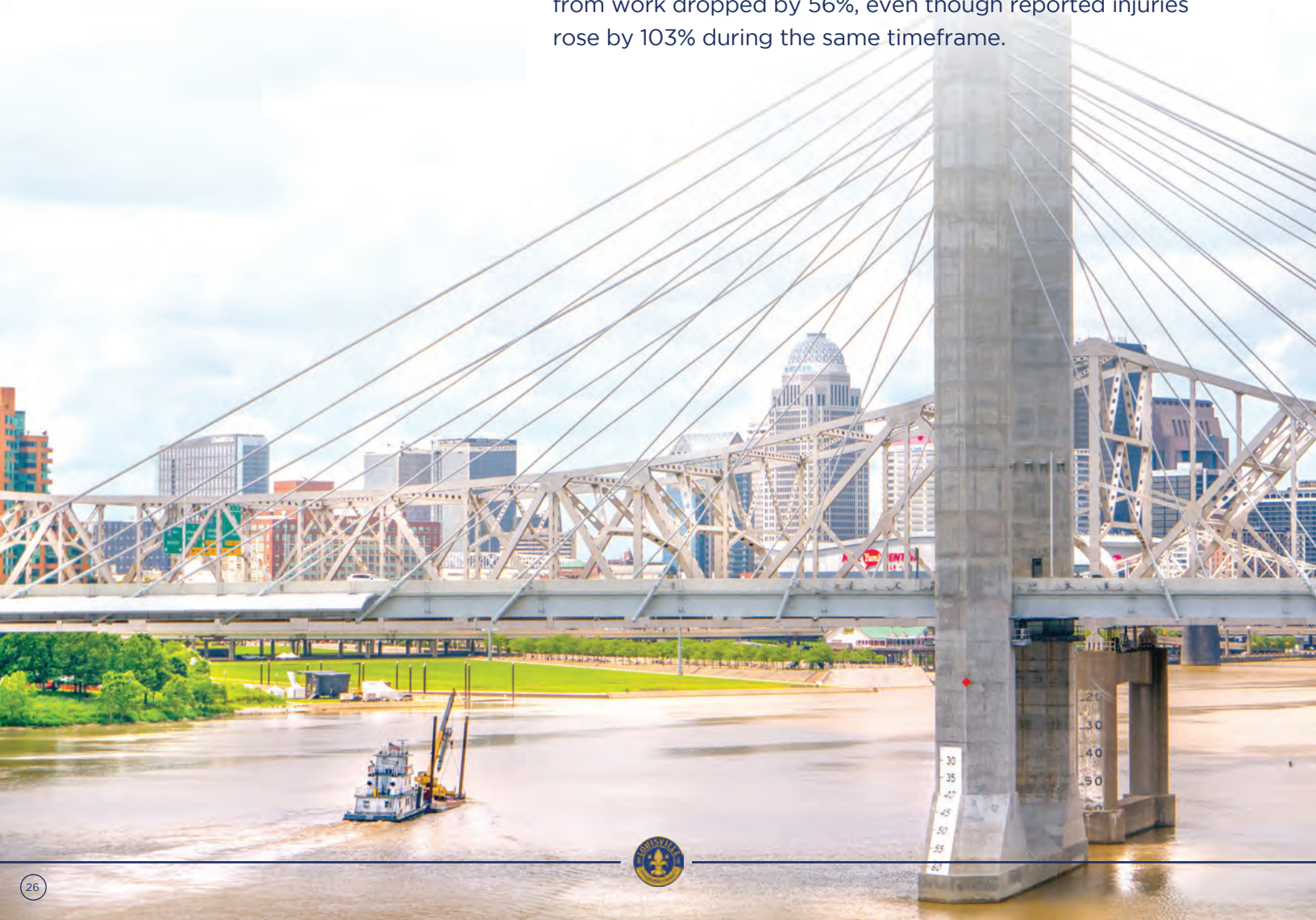
1

GIVE OUR POLICE THE SUPPORT THEY NEED TO PROTECT OUR COMMUNITIES (Continued)



Spotlight: Summit Wellness Center

In 2024, Mayor Greenberg's Administration launched the new Summit Wellness Center for first responders, which has become a national model. The Center's resources are focused on maintaining the physical, mental, spiritual, social, and financial well-being of those engaged in a profession that can be dangerous, physically challenging, and emotionally demanding. The services offered at the Summit Wellness Center have drastically decreased the number of days officers are away from work, which means more officers are on the street protecting the public and saving taxpayer resources by reducing costly overtime from backfilling shifts. A year-over-year comparison shows that in 2024, police officers' days away from work dropped by 56%, even though reported injuries rose by 103% during the same timeframe.





SAFE LOUISVILLE | ENFORCEMENT

A Comprehensive Violence Reduction Plan | 2025 - 2030

2

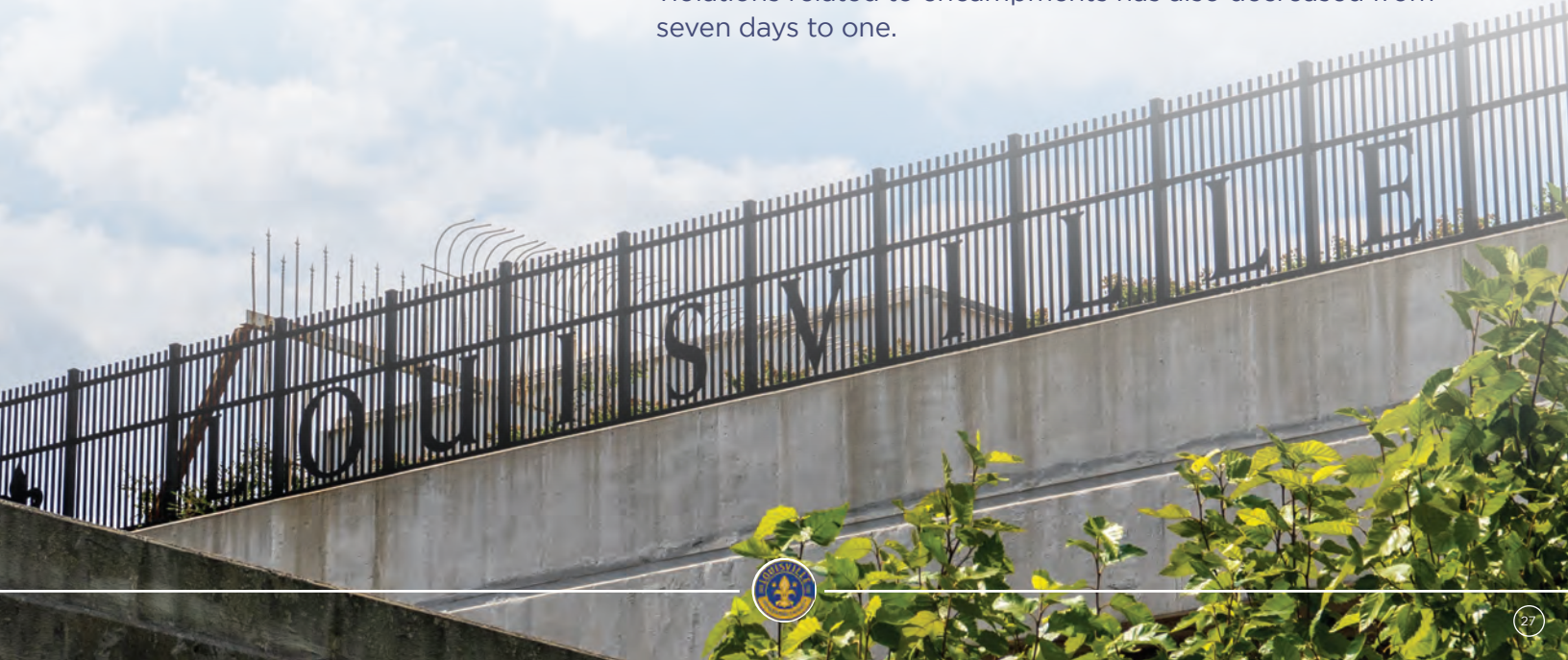
PROMOTE PUBLIC ORDER

- Provide resources to unhoused people to preserve their health and safety, as well as the health, safety, and accessibility of our public spaces for everyone, and enforce unlawful camping laws
- Hire park rangers to enforce curfews and other conditions of park usage
- Provide resources for people to enjoy all of the shopping, dining, and entertainment Downtown Louisville has to offer



Spotlight: Safe and Healthy Streets Initiative

Safe and Healthy Streets is an initiative committed to enforcing law and order in public places and preserving community access to areas such as sidewalks, bus stops, and parks, all while working to ensure the health and safety of unhoused people by connecting them with resources they need. Mayor Greenberg's Administration has coordinated the efforts of LMPD, Metro Public Works, and Metro Homeless Services Division ("HSD") to address these challenges, in particular, encampments of unhoused people. HSD's outreach team educates the homeless about shelter options and services available. HSD directs the relocation and decommissioning of encampments with the support of a specially trained LMPD response team. Public Works cleans our public spaces. As of March 14, 2025, these collective efforts had directly resulted in a 58% reduction in citizen complaints about encampments in 2025 compared to the same period in 2024. The response time to address violations related to encampments has also decreased from seven days to one.





2

PROMOTE PUBLIC ORDER (Continued)



Spotlight: Ambassadors Program

Mayor Greenberg has increased the city's investments in the successful Ambassadors Program, a partnership with Humana. These efforts are focused on the Central Business District and at least seven other neighborhoods across Louisville. The ambassadors are employed to provide public safety information, maintain contact with business owners, provide information to visitors, shoppers, workers, and residents, and report potential or actual emergencies. All ambassadors in the program receive training in areas of observation, reporting, hospitality, public engagement, and de-escalation. Last year, in partnership with Louisville Tourism and Humana, the city doubled the number of ambassadors to 38 and increased their hours of operation, from 7 a.m. to midnight.



Spotlight: High Utilizers Working Group

Starting in February 2024, Mayor Greenberg's Administration partnered with the Jefferson County Attorney's Office to focus attention on individuals whose significant mental health issues cause them to cycle between jail, hospitalization, and living on the streets. Through enhanced communication and coordination, the risk posed by these individuals to themselves and others has been reduced through effective services or, in extreme cases, detaining dangerous individuals for treatment in accordance with law. Louisville Metro's Office of Social Services will focus on rendering services to this population and coordination with partner agencies.



3

LEVERAGE STATE AND FEDERAL PARTNERSHIPS

- Collaborate with state and federal partners to prioritize investigating, apprehending, and prosecuting the people who are driving violence in our city
- Encourage our federal law enforcement partners to assist LMPD with deterring crime in the areas that need it most



Spotlight: Violent Crime Reduction Team

In October 2024, Mayor Greenberg's Administration collaborated with Kentucky Attorney General Russell Coleman and Commonwealth's Attorney Gerina Whethers to assemble a first-of-its-kind team of prosecutors devoted to increasing Louisville's capacity to fight gun violence. AG Coleman established a new AG's Office location in Louisville for prosecutors and a detective who focus on select cases involving nonfatal shootings and high-priority felons in possession of firearms. As AG Coleman stated, "Historically, the Attorney General's Office has not taken an active role in prosecuting violent crime in Louisville. That changes today . . . Through the collaboration with Commonwealth's Attorney Whethers, Mayor Greenberg, and other officials, our prosecutors and investigators will be here fully focused on keeping families in this community safe." As of March 2025, the new team has secured indictments in more than 25 gun cases.



Spotlight: Prohibited Firearms Possessor Initiative (PFP)

Mayor Greenberg's Administration will continue to support PFP, a new initiative launched in 2024 that brings together local and federal law enforcement and prosecutors to prioritize cases against prohibited firearms possessors who drive violence in our city. The goal of PFP is to reduce violent crime through a multi-tiered approach that swiftly addresses those participating in illegal, violent activities. Emphasis is placed on seizing illegal firearms and prosecuting illegal possessors who further the cycle of violence in our community. By delivering a well-organized and thorough investigation, the prosecutors on the team are more successful in ensuring prohibited firearms possessors receive the maximum possible penalty under the law.



SAFE LOUISVILLE | ENFORCEMENT

A Comprehensive Violence Reduction Plan | 2025 - 2030

4

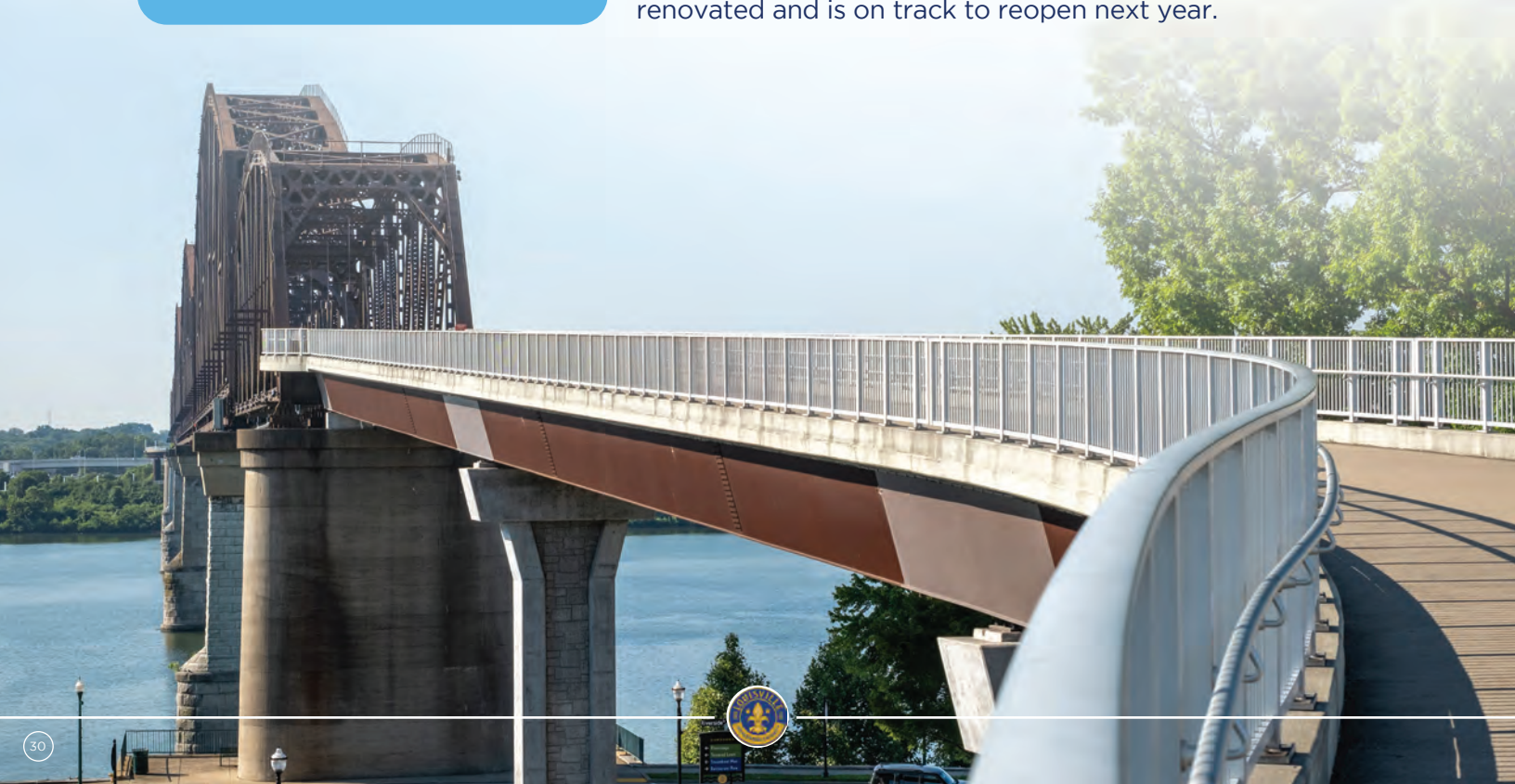
PROMOTE JUSTICE SYSTEM TRANSPARENCY AND PROCESS IMPROVEMENTS

- ✿ Work with the County Attorney, Commonwealth's Attorney, and the courts to ensure that judges who are making detention and sentencing decisions have complete information about the nature of the crime and the history and characteristics of the offender
- ✿ Support data collection efforts and community efforts to educate the public to ensure people have an accurate understanding of judicial decision-making and can evaluate outcomes with respect to prosecutions and pretrial detention
- ✿ Reopen juvenile detention facilities in Jefferson County to allow detained juveniles to stay closer to their families, communicate more easily with their lawyers, and be transported more easily to court



Spotlight: Jefferson Co. Juvenile Detention Centers

In 2020, the Jefferson County Youth Detention Center (JCYC) closed, leaving our judges with no option to detain juveniles who commit serious felonies close to home. Instead, they must either release them or send them to a detention center hours away from their families, friends, and lawyers. The JCYC building must be renovated before it is reopened. Mayor Greenberg's Administration is working with the state, who owns and will operate the new JCYC, to push the project forward. Bidding for the renovation of that facility began in April 2025. In addition, the detention center for lower-level juvenile offenders in Lyndon is being renovated and is on track to reopen next year.





OFFICE OF VIOLENCE PREVENTION

Implementation of **SAFE LOUISVILLE** will be coordinated by the Mayor's Office under the leadership of a newly created position: the Mayor's Executive Director for Community Safety. The Office of Safe and Healthy Neighborhoods (OSHN) will be renamed the Office of Violence Prevention and will report to the Executive Director of Community Safety. The office will be tasked with overseeing OSHN's functions as well as tasks that support the implementation of the rest of **SAFE LOUISVILLE**, such as maintaining and circulating an updated inventory of the city's community organizations doing work in the violence prevention and reduction space and serving as a resource to keep our community organizations connected. The Executive Director will also oversee other city crime reduction efforts such as Group Violence Intervention and coordination of Metro agencies participating in Sustained Focus Improvement. This consolidation of oversight will allow for better coordination among those working to reduce crime in our city, as well as the development of consistent metrics by which to measure the efficacy of various crime reduction strategies.

COMMUNITY SAFETY COMMISSION

In addition to city government, prosecutors, and the courts, many nonprofits and faith-based organizations in Louisville contribute to preventing violence, mitigating its impacts, and addressing its root causes. As Mayor Greenberg's Administration implements its plan, it is important that this ecosystem receive regular reports concerning the progress made, have the opportunity to provide regular feedback, and have a forum to provide advice and guidance concerning adjustments or improvements.

Accordingly, a key component of **SAFE LOUISVILLE** is the creation of the Community Safety Commission, which will be comprised of representatives of various stakeholders working to reduce violence. The purpose of the Commission will be to receive information about progress, ensure transparency and accountability, and provide valuable feedback. Membership will include community representatives from each police division of our city, representatives from the justice system, and representatives from community organizations from various sectors, such as faith, crime victims, criminal justice advocacy, business, immigrants, medicine, education, and homeless services.



DATA COLLECTION AND REPORTING

During the implementation of this five-year plan, the Office of Violence Prevention will collect data regarding the success of various crime reduction initiatives and other relevant metrics. Within one month of the end of each 12-month period of implementation, the Office will prepare an annual report of such data and, based on that data, make recommendations for changes or additions to the plan. This information will be presented to the Community Safety Commission for discussion and feedback. Success will be, in the short-term, a reduction in gun violence and homicides by at least 15% per year; in the mid-term, improvement in the community's perception of safety and trust as measured by survey data; and in the long-term, giving the next generation of Louisvillians the support they need to live free from violence, as measured by improvements in education, health, employment, and public infrastructure equity for those in underserved communities.

Residents' perception of safety is of critical importance. To help Louisvillians feel safe, it is important that they have access to information about the city's crime reduction efforts and learn about the progress our city is making. To that end, Mayor Greenberg's Administration will create an online **SAFE LOUISVILLE** bulletin that provides updates to the public on various crime reduction initiatives and quick access to crime facts. The Administration will also promote positive stories that highlight progress made throughout the implementation of this plan, in particular the efforts of the many dedicated community organizations who work tirelessly to bring hope and opportunity to their neighborhoods.





SAFE LOUISVILLE | CONCLUSION

A Comprehensive Violence Reduction Plan | 2025 - 2030

Violence destroys lives—not only the lives of victims, but also the lives of their families, friends, and communities. And the reverberations of such violence are felt across our city. Public safety is Mayor Greenberg’s top priority, and it will continue to be until every resident in every corner of this community is safe and feels safe in their neighborhoods. The violence reduction efforts described in this plan will require sustained momentum and collaboration among community organizations, law enforcement, and government, to build an even safer city that every citizen deserves.

SAFE LOUISVILLE demonstrates Mayor Greenberg’s commitment to combat crime through prevention, intervention, and enforcement, and to work hand-in-hand with our partners to get the job done.

**TOGETHER WE’RE BUILDING AN
EVEN SAFER, STRONGER, AND
HEALTHIER LOUISVILLE.**





A COMPREHENSIVE VIOLENCE REDUCTION PLAN

2025  2030



ORGANIZATIONS FUNDED BY MAYOR GREENBERG'S ADMINISTRATION¹

2 Not 1 Fatherhood & Families, Inc.

Funds support the facilitation of the High Road Leadership Development Training to fathers and families in the Park Hill neighborhood. The program consists of two tracks, one for parents and caregivers, and another for professional development, both focusing on areas of accountability, self-responsibility, and conflict management.

Funds also support the Blueprint Rites of Passage, a program for Black boys between 4th & 8th grades. These boys often come from single-parent homes headed by mothers. The boys participate in weeks of discussion and trips and connect with mentors.

100 Black Men of Louisville

The mission of 100 Black Men of Louisville, Inc. is to improve the quality of life within our communities and enhance educational and economic opportunities for all African Americans. Funds build programmatic capacity.

A Hand Up Community Resource Center, Inc.

A Hand Up is a faith-based organization dedicated to closing the divide between individuals facing economic challenges (housing, education, transportation) to enhance their standard of living. Funds help build organizational and programmatic capacity.

Funds also support a six-week curriculum for at-risk youth and young adults over the summer, which leverages a network of trusted messengers who provide testimonies regarding experiences with violence to foster mentorship and a web of support for young adults at risk of violence.

ACE Project

By combining the power of compassion, essential resources, and unique opportunities, the ACE Project's mission is to transform the lives of underserved children and families impacted by gun violence and trauma. The ACE Project empowers marginalized youth and families by fostering a supportive environment, promoting resilience, and providing comprehensive support systems. Funds support building programmatic capacity.

Funds also support the Academy of Child Entrepreneurship, which prepares youth for success in workplace, life, and the community by providing financial literacy and educational support, supporting business development, providing mentorship, and improving the socioeconomic status of youth.

¹ This document is a non-exhaustive list. The information in it was obtained from the Louisville Metro Office of Violence Prevention (formerly OSHN) and was provided by the organizations themselves. Some of the grant funding in this list has concluded, and some is ongoing.



ORGANIZATIONS FUNDED BY MAYOR GREENBERG'S ADMINISTRATION

Adelante Hispanic Achievers

Adelante Hispanic Achievers (AHA) was created to support and empower Louisville's Latinx youth and their families, helping them succeed in four critical areas of development: personal, social, cultural, and educational. Funds support educational programs and general support for Hispanic youth.

Funds also support the SABER program, a weekly workshop that provides experiential learning opportunities and educational field trips for Hispanic/Latinx students in the Louisville area. Every Saturday during the academic year, SABER invites presenters to share their knowledge and experience with a 6th-12th grade Achievers group. SABER also conducts field trips to various enrichment activities within the community to enhance students' understanding of their options in life after high school graduation.

Adversity Skills Sports Academy

Adversity Skills promotes sports and related activities to effectively build the resilience of at-risk youth. Strengthening the life skills of youth is a key objective to minimize risk factors and maximize protective factors related to crime, violence, and drug use. By enhancing knowledge of the consequences of crime and substance abuse and developing life skills, the initiative seeks to positively influence behavior and attitudes of at-risk youth and prevent anti-social and risky behavior. Funds help build organizational and programmatic capacity.

Funds also support various agency programs implemented across multiple Louisville community centers as part of an extended-hours summer programming initiative.

African in America

The African in America is a nonprofit dedicated to bridging the gap between African immigrants and African Americans. The African in America creates a welcoming space where youth and families come together, fostering unity, empowerment, and opportunity through mentorship, education, and sports. Funds support building operational and programmatic capacity.

ORGANIZATIONS FUNDED BY MAYOR GREENBERG'S ADMINISTRATION

Americana Community Center

Funds support the youth program, which includes out-of-school activities and programming that provides low-income youth the opportunity to develop academically and personally while providing a safe, healthy place to attend after school and during the summer.

Armed and Educated, Inc.

This organization is changing the narrative around firearm violence in our communities with information, education & training. Funds help build organizational and programmatic capacity.

Funds also enhance the Student Safety Watch program, which ensures a protective presence for students during their commutes home from school, by training our youth on safety, awareness, and protocols. This focus addresses not only immediate safety concerns but promotes long-term pride and cohesion in the Smoketown community.

ASILI Inc.

ASILI Center focuses on increasing opportunities for immigrant and refugee communities through youth-led and identified programs and action. Funds support the Worldwide Youth Programs.

Big Brothers Big Sisters of Kentuckiana

Big Brothers Big Sisters of Kentuckiana matches children and teens ages 7-15 with an adult Big in a one-to-one mentorship. BBBSKY's Big Futures program gives Bigs and Littles ages 16 and up the option to continue their match and receive match support up to the age of 25. Funds support expanding Project Connect to serve 220 youth in West Louisville and Newburg through evidence-based mentoring.

Funds also support the School-to-Work Program, which works with student cohorts from four high schools and pairs them with one-on-one mentoring. Students meet at local corporate partner's offices and are matched with a mentor from the business who provides a supportive network for the students, engaging in conversations about goal setting, finances, communication, and career development.

Funds also support the Youth Violence Prevention program.



ORGANIZATIONS FUNDED BY MAYOR GREENBERG'S ADMINISTRATION

Big Table

Funds support the coordination of the Louisville Alliance for Sustainable Gun Violence. The alliance exists to bring together individuals and organizations that are committed to reducing gun violence in Louisville by creating a community of connection, trust, learning and productivity to impact violence and increase peace.

Bosses Not Bangers, Inc.

Boss Not Bangers is an organization that is changing the perspective of the youth in our community through mental health and entrepreneurial mentorship. Funds help build organizational and programmatic capacity.

Boys & Girls Club, Inc.

Funds support the SMART (Skills Mastery & Resilience Training) program. SMART Moves is a suite of targeted programs and other resources designed to help young people develop healthy decision-making attitudes and skills.

Funds also support the Shawnee, Parkland, and Newburg Clubs, which provide a safe environment where teens can focus on their wellbeing, education, and future. The funded program focuses on the following evidence-based programs: SMART Girls, Passport to Manhood, and Positive Action. Additional programs are offered preparing teens for life after high school, to include financial literacy, post education, and job readiness.

Bridging the Gap

The Virtual Learning Academy provides online enrichment programs and after-school tutoring to K-6 students in the areas of math, reading, writing, spelling, and study skills. Tutoring sessions are held in Google classrooms. Sessions are divided by grade level, with no more than seven students per session. Funds provide programmatic support.

Buttafly Center, Inc.

The Buttafly Center is a community agency dedicated to the empowerment of women via the following principles: education and training, personal development, and communal resources. Funds support building operational and programmatic capacity.



ORGANIZATIONS FUNDED BY MAYOR GREENBERG'S ADMINISTRATION

CASA, Inc.

Court Appointed Special Advocates (CASA) of the River Region provides direct advocacy services to children (from birth to 18 years of age) with active abuse and neglect cases in family court. Funds support the Advocacy Academy and Support Program.

Catholic Charities of Louisville, Inc.

Funds support the Bahkita Empowerment Program. Providing direct assistance and case management to survivors of human trafficking, this program also aims to educate the community about human trafficking, as well as how to identify individuals who are being forced or coerced for the purpose of sexual exploitation or labor. Funds support legal immigration services navigation for victims of violence.

As part of the Louisville Trauma Resilient Communities Healing Project, funds also support Catholic Charities's Anti-Racism Organizational Support Leadership training and training on the I AM Building a Healthy Male Identity curriculum to project partners and supporting agencies.

Center for Neighborhoods, Inc. d/b/a Louisville Community Design Center

Funds support the Center's management of the Pivot to Peace Community Violence Intervention Outreach Training Academy, coordinating all training sessions to ensure consistency in professional development and certification.

Center of Nonprofit Excellence

The Center of Nonprofit Excellence provides capacity building, to include training, consulting, and grant writing assistance for organizations selected to participate in OSHN's Community Nonprofit Capacity Building Fellowship.

Center for Women and Families

The Center for Women and Families provides trauma-informed advocacy and support for individuals, families and communities affected by intimate partner violence and sexual assault. They mitigate the impact of trauma by building resiliency and reducing risk factors at all levels. Funds support the children's program.



ORGANIZATIONS FUNDED BY MAYOR GREENBERG'S ADMINISTRATION

Change Today Change Tomorrow

Funds support the Parkhill Youth Engagement Program, which provides a mentorship program for youth with a focus on financial literacy, budgeting, and leadership development; access to literacy, chess, and social-emotional skill development for youth; a community garden as a community beautification project; and weekly free groceries through the established Feed the West Initiative.

Children's Hospital Foundation d/b/a Norton's Children Hospital

The Norton Children's Hospital Foundation is the philanthropic arm for Norton Children's pediatric facilities and services. Funds support programs and activities within the Institute for Health Equity.

Funds also support the Childhood Injury Prevention team's gun safety education and training programs. This team is dedicated to reducing childhood injuries in Louisville, throughout Kentucky and Southern Indiana. Unintentional injuries are the leading cause of fatalities in children from birth through age 19.

C.H.O.I.C.E, Inc.

Children Have Options in Choosing Experiences, Inc. is a comprehensive, nonprofit, community-based prevention and early intervention program designed to steer high risk/at risk youth and adolescents into making more positive life choices. C.H.O.I.C.E. believes adolescence is a dynamic and challenging time of life, during which education, support, and guidance from adults and peers can nurture positive youth development. C.H.O.I.C.E. also assists in the reduction of use and abuse of chemical dependency and community violence. They provide services to families in crisis. The overall goal of all C.H.O.I.C.E. programming is to aid youth and adolescents in navigating issues at home, school, and the community by bolstering resilience levels, coping skills, and problem-solving skills to make positive choices. Funds help build operational and programmatic capacity.

Funds also support the Dare to Dream Sports Leadership and Mentoring Program, where athletes from local high schools mentor 4th and 5th grade students. Mentors receive eight weeks of group sessions before participating in Advanced Mentoring Training.



ORGANIZATIONS FUNDED BY MAYOR GREENBERG'S ADMINISTRATION

ChoZen Inc.

ChoZen Inc is dedicated to cultivating confidence & emotional intelligence by restoring the lost narratives of BIPOC & advocating cultural healing practices of members of a unique subculture. ChoZen achieves this mission via the following avenues: performing arts/academic enrichment, publication, and wellness. Funds support various programs implemented across multiple Louisville community centers as part of an extended-hours summer programming initiative.

Coalition Supporting Young Adults

The Coalition Supporting Young Adults, a collective action initiative committed to transforming the way we reconnect youth and young adults in Louisville, focuses on reengaging out-of-school high school age students who are off-track. This programming helps youth and young adults identify their education goals, learn skills to succeed academically, and advocate for themselves, and assists them to find and access the education pathway that works for them.

Funds support the Louisville Youth Network, a free, one-stop shop for sharing what services and programs are available to Louisville's youth (ages 16-24) who are not in school, not working, or simply need support. Through the Network, youth have the opportunity to receive wrap-around services, support, and mentorship from a collaboration of multiple partners to include Goodwill Industries of Kentucky, Louisville Urban League, and the Coalition Supporting Young Adults.

Council on Developmental Disabilities

In recognizing the intersectionality of race, disability, and socio-economic status, this organization delivers projects to bridge the gap in services and increase equity in access to resources for developmentally disabled youth and families in marginalized and underserved communities in Louisville's West and South End.

Crossnore Communities for Children

Funds support assisting high-risk youth and families managing trauma in West and South Louisville. The team helps promote resilience and equity in communities that have recently faced civil unrest by providing evidence-based violence prevention and community youth engagement programs as well as links to trauma-informed behavioral health services.



ORGANIZATIONS FUNDED BY MAYOR GREENBERG'S ADMINISTRATION

Cure Violence Global

Cure Violence Global provides technical assistance to Louisville's Pivot to Peace Community Violence Intervention Initiative to include program development and implementation, violence interruption and reduction training to all staff, and data collection, storage, and evaluation.

Cycle Breakers Breaking Chains, Inc.

This is a nonprofit organization dedicated to fostering personal growth, education, accountability, and the right to relationships among gun violence victims and families. Funds help build operational and programmatic capacity.

de Paul School, Inc.

Funds support providing tutors ages 16-24 with training on de Paul's teaching methods and opportunities for learning, growth, and relationship cultivation.

Funds also support the summer school program, which consists of two three-week sessions, and provides a structured, multisensory, and attention-based environment for students who have specific learning disabilities or who are experiencing academic difficulties in their current school.

Delta Foundation

The DELTA Foundation is a mentorship program that specializes in helping at-risk youth in Louisville obtain the tools necessary to be successful academically, socially, and athletically. In June 2019, the DELTA gymnasium opened, which is equipped with 3 classrooms and a high school-length basketball court where DELTA has over 250 students enrolled in various programs. Funds support Delta Summer Day Camp.

Funds also support the Hoops and Homework program, a daily after-school program that provides free tutoring, basketball instruction and skills training/games, and mentorship for elementary and middle school students.

Funds also support programmatic capacity.



ORGANIZATIONS FUNDED BY MAYOR GREENBERG'S ADMINISTRATION

Earhart Club

The Earhart Club's mission is to empower individual children, adults, and families to understand their value and learn their value alongside each other, to build genuine community from the ground up rather than managing it from the top down, and to equip children with the skills necessary to build strong relationships with those around them, by inspiring curiosity, fostering genuine connections, and encouraging them to embrace their authentic selves. Funds support building operational and programmatic capacity.

Educational Justice

Educational Justice is a non-profit striving to end educational inequity by pairing 5th-8th grade students with high-achieving high school peers for long-term one-on-one tutoring and mentorship to improve their academic performance and social development. Funds support programmatic capacity.

Emerging Workforce Initiative d/b/a The Book Works Project

The Book Works advocates for equitable access to education and employment for young people who are, or are at-risk of becoming, disconnected because of educational disruptions, childhood trauma, social or racial discrimination, or economic hardship. Funds support education advocacy services.

Funds also support the Education Engagement Hubs, which offer programming on most school days during school hours to help middle and high school students focus on academics while managing challenges that lead to absences, suspensions, or leaving school before graduating. Programming includes life skills workshops, homework help, individual goal setting, and hands-on projects that develop academic, reading, and teamwork skills.

Funds also support the Engagement Site Literacy Program.

Emma Lees Transformation Studios, Inc.

Emma Lees Transformational Studios is a wellness center that offers a variety of services aimed at personal growth and self-improvement. Specializing in transformational practices, the studio provides a supportive environment for individuals seeking to enhance their physical, mental, and emotional well-being. Funds build operational and programmatic capacity.

ORGANIZATIONS FUNDED BY MAYOR GREENBERG'S ADMINISTRATION

EmpowHer with Open Arms, Inc.

EmpowHer with Open Arms's goal is to enrich and empower individuals and families by inspiring people to create healthy habits, which will help them become productive citizens. Funds support various programs implemented across multiple Louisville community centers as part of an extended-hours summer programming initiative.

Exploited Children's Help Organization

ECHO is dedicated to preventing and reducing the incidence and impact of child abuse. Through education they create awareness, with compassion they provide support. Funds support several of ECHO's educational and support programs.

Family and Children's Place

Funds support the Collaborative Learning After School Program and Academic Enrichment programs. CLASP is an evidenced based program where facilitators and caseworkers meet with middle school youth and their families after school and in the evening and provide interactive programs that focus on improved academics, delinquency prevention, and behavior change, with an end goal of strengthening the family. The Academic Enrichment Program operates daily during the school year to ensure youth achieve academically, emotionally, and socially.

Funds also support the Child Advocacy Center, which mitigates the trauma of child sexual abuse utilizing best practices, to include the use of a multidisciplinary team that manages and coordinates services for the youth and family.

Father Maloney's Boys and Girls Haven

Boys & Girls Haven is a private non-profit agency supporting youth and families in Kentucky through a multifaceted and comprehensive continuum of care. Funds support Independent Readiness and Pre-Independent Living programs staff who serve as purposeful change agents, equipping youth with tools, resources, and individualized support so they can enter adulthood with confidence, purpose, and determination.

Funds also support participation in the Trauma Resilient Communities Expansion Project, where Father Maloney's serves staff and clientele of OSHN, YMCA School Aged Childcare Services and Neighborhood Place by providing therapeutic restorative interventions to staff and therapeutic trauma-focused services and interventions to targeted youth and families.



ORGANIZATIONS FUNDED BY MAYOR GREENBERG'S ADMINISTRATION

Feed Louisville

Feed Louisville provides meals at Community Sanctuary Project activations, where faith-based leaders and mental health providers work together to engage Louisville residents who have been exposed to gun violence, providing spiritual and/or emotional support.

First Gethsemane Center for Family Development, Inc.

The mission of the CFD is to reduce barriers to success by providing quality facilities, services, and programs to individuals and families in our communities through economic empowerment and educational, social, and recreational activities. Funds support the Teach One Academy, After School Tutoring Program, and Summer Enrichment Camp.

Food Literacy Project

Leveraging food and sustainable agriculture, youth leadership, cross-sector partnerships, and neighborhood assets, FLP works toward a vision for a healthy and equitable community where people and places thrive. Young people advance food security, health, equity, and prosperity through a community food system. Funds support programs that create youth employment, education, leadership, and career development opportunities; provide fresh local produce to Louisville neighbors in need; engage youth in seeking systemic solutions; and cultivate a generation of young people empowered to contribute meaningfully to shaping a healthier future.

Free 2 Hope, Inc.

Free 2 Hope operates a drop-in center designed to be a safe space to help women escape violence and drug addiction. Funds help build operational and programmatic capacity.

Friends of Nicole 50/50 Mentoring Collaborative, Inc.

Friends of Nicole 50/50 Mentoring Collaborative was created to build a robust conduit for Black women to stand as mentors for Black girls, with a steadfast commitment to equip young girls with tools for self-expression through art and the transformative realm of technology and social media. Funds help build operational and programmatic capacity.

Funds also support the Integrated Community Safety and Beautification Initiative, a 15-week program with a focus on social cohesion, mental health,



ORGANIZATIONS FUNDED BY MAYOR GREENBERG'S ADMINISTRATION

and conflict resolution as it pertains to gun violence for at-risk youth and young adults in the Newburg neighborhood.

Funds for the Arts

Funds support FFTA's Expressive Art Therapy, which includes three priority initiatives: Arts in Institutions, Arts in Learning, and Arts in Neighborhoods. FFTA provides Art Therapy to engaged youth in various community centers located within neighborhoods experiencing elevated levels of violence. FFTA selects, trains, and provides stipends to young adults to serve as project liaisons. Funds also support intensive summer programs.

Galilee Community Development Corporation

Galilee Community Development Corporation seeks to transform our community through youth outreach including tutoring, mentoring, and more. Funds help build organizational and programmatic capacity.

Gate of Hope Ministries International

Funds support the Gosheni Farm Trauma Recovery Healing Program. Gosheni is a holistic initiative whose purpose is to transform the lives of East African refugees resettled in Louisville. It provides trauma recovery and healing through farming, utilizing cross-cultural and multicultural therapy. The strength of the program is that refugees are served in their native languages of Swahili, Kinyarwanda, French, Kirundi, and Kinyamulenge.

Funds also support the Tabara Initiative, a training and mentorship program designed to transform the lives of East African young women and girls who are at risk of sexual exploitation through education, prevention, and restoration. The program educates girls and young women in Louisville about the dangers of sexual exploitation and trafficking; equips them with the necessary knowledge and tools to protect themselves against sexual predators; and empowers them with the skills and resources to overcome challenges that they are facing and build strong futures.



ORGANIZATIONS FUNDED BY MAYOR GREENBERG'S ADMINISTRATION

Goodwill Industries of Kentucky, Inc.

Funds support the Young Adult Thrive Program, which seeks to help reduce recidivism among justice-involved youth attending alternative high schools and improve the likelihood they will achieve and sustain full-time employment. Key to achieving these outcomes is providing equitable access to mental, behavioral, and trauma-informed counseling.

Funds also support the Louisville Youth Network, a free, one-stop shop for sharing what services and programs are available to Louisville's youth (ages 16-24) who are not in school, working, or simply need support. Through the Network, youth have the opportunity to receive wrap-around services, support, and mentorship from a collaboration of multiple partners to include Goodwill Industries of Kentucky, Louisville Urban League, and the Coalition Supporting Young Adults.

Funds also support The Spot, which offers free career services to young adults ages 16-24 to include: barrier removal resource facilitation including legal counseling; mental/behavioral/trauma counseling; substance use disorder recovery counseling; housing assistance; food security; expungement assistance; and access to healthcare. Goodwill also provides case management, Soft Skills training, digital skills training, forklift and other certifications, and job placement assistance.

Funds also support Goodwill's participation in Louisville's Community Violence Intervention (CVI) Program. As a partner in the Pivot to Peace Initiative, the agency employs outreach workers/credible messengers to implement the program in the Newburg, Algonquin/Park Hill, Taylor Berry, and Russell neighborhoods.

Harbor House of Louisville

Harbor House offers unique and individualized programs to teens and adults who are looking to further their independence and gain real life experiences in the community. Funds support growth and expansion of the Young Adult Program and the Teen Life Program, each offering a variety of educational and social growth programs.

Highland Park Community Development

H.E.L.P. is a year-round program that focuses primarily on academic enrichment and cultivating qualities to make and sustain positive change in our community. The two components of the program are an after-school program and six-week summer leadership camp. H.E.L.P. supports K-5 grade students and S.W.A.G. supports 6th-9th grade students. Funds provide programmatic support.



ORGANIZATIONS FUNDED BY MAYOR GREENBERG'S ADMINISTRATION

Home of the Innocents

Funds support the Pathways HOME (Hope, Opportunity, Motivation & Experience) program that provides housing and supportive services to young adults, ages 18-24, and their children experiencing homelessness. Case managers conduct assessments and support case plans around education, employment, and independent life skills.

Hope by Hope

Hope by Hope provides 12 weeks of curriculum and facilitation for at-risk youth. The curriculum covers a range of topics related to personal, social, and community care and awareness. Every 4 weeks participants are taken on an enrichment field trip that relates to the topics previously discussed. Funds provide programmatic support.

Inside the Lines Training, Inc.

Funds support serving students from under-resourced communities and providing them with academic tutoring, athletic training, and mentorship.

Inspire 1 Corporation

Inspire 1 focuses on helping individuals realize the power of education in their lives. Their Empowered Potential program is a life skills and leadership development program designed for middle and high school youth and young adults (18-24). Through interactive and engaging experiences, they aim to inspire and equip participants to become their best selves—building confidence, making empowered decisions, crushing goals, and using their strengths to positively impact their lives and their community. With a strong focus on violence prevention, the program equips young people with decision-making, communication, and problem-solving skills that help create safer, more inclusive communities. Funds provide programmatic support.

Interfaith Paths to Peace

Funds support the coordination of the Louisville Alliance for Sustainable Gun Violence. The alliance exists to bring together individuals and organizations that are committed to reducing gun violence in Louisville by creating a community of connection, trust, learning and productivity to impact violence and increase peace.



ORGANIZATIONS FUNDED BY MAYOR GREENBERG'S ADMINISTRATION

ITeach, Inc.

ITeach's goal is to provide high-quality, free education to immigrant children and parents in subjects such as Information Technology, Business Management, Sports, Cultural Heritage, and more. Funds help build operational and programmatic capacity.

I Would Rather Be Reading

I Would Rather Be Reading is dedicated to making education fun and engaging for students in Louisville. They provide quality after-school programming that excites students about learning and inspires them to achieve success. Their goal is to create a safe, supportive environment where students can explore their interests, develop new skills, and build self-confidence. Funds support the Elevate and Educate Program.

Funds also support the Read to Lead program, which strives to create equality and equitable literacy interventions and social emotional learning supports. Participants are paired with Trauma-Informed Reading Mentors to support their academic, social, and emotional growth.

Jewish Community of Louisville

Yachad, Hebrew for "together," is an inclusion program that enables children with various physical, cognitive, emotional, and medical challenges to attend JCC programs alongside their peers. The program is incorporated in JCC's year-round Early Learning Center, camps, and out-of-school-time programming. Advocates are assigned to assist and support each program participant. Funds provide programmatic support.

Jewish Family & Career Services of Louisville, Inc.

Over a six-month period, transition-aged youth participate in a series of individual and group activities facilitated by a career counselor with a focus on setting education and career goals and building individual confidence and life skills. Wraparound services and support are provided to address barriers that prevent success. Funds provide programmatic support.

Joshua Community Connectors

In partnership with the Office of Violence Prevention (formerly OSHN) and Group Violence Intervention, JCC works with youth and families to break down barriers to mental health, housing, and employment services. Funds provide programmatic support.



ORGANIZATIONS FUNDED BY MAYOR GREENBERG'S ADMINISTRATION

Junior Achievement of Kentuckiana, Inc.

Junior Achievement of Kentuckiana is a nonprofit that inspires and prepares young people for success. Students participate in 12 teacher-led in-class financial literacy education sessions throughout the school year which culminates in students visiting a simulated town at the Junior Achievement facility where they learn to operate businesses and municipalities, participate in elections, and budget. Funds support the organization's youth entrepreneurial experiential and leadership programs.

Kentuckiana Works d/b/a Louisville Workforce Development Board

Funds support empirically informed services that transform social ecology with an added racial equity lens and give tangible results that expand into a scientific conversation about "what actually works" in workforce development. Services include intensive workforce/education/barrier removal services. Funds support these services.

Funds also support providing full-time, onsite clinical support to participants attending The Spot who are not eligible for Medicaid services and providing de-escalation services to onsite conflicts.

Kentucky Chess Ambassadors, Inc.

The organization hosts a series of training camps that are offered free of charge to all students. The camps focus on chess and financial literacy to prepare students for the return to school. Funds support the Chess in the Community program.

Kentucky Refugee Ministries

The goals of the KRM Refugee and Immigrant Youth Services Program are to promote student academic achievement, school readiness, and social emotional development. This program fosters greater English proficiency among students, cultural understanding, and community building. Funds provide programmatic support.



ORGANIZATIONS FUNDED BY MAYOR GREENBERG'S ADMINISTRATION

La Casita Center, Inc.

La Casita Center enhances the well-being of Louisville's Latinx community through education, empowerment, advocacy, and wellness. Funds support the Familia Fuertes program that provides counseling and case management for individuals who have been victimized by domestic abuse, sexual assault, and human trafficking.

Funds also support the Child Enrichment Program. La Casita recognizes that children have a right to share space in this world. Because of this they strive to always offer a form of child enrichment during all of their events. Their approach to child enrichment ranges from dedicated childcare, to play areas for caregivers and their kids, to use of free toys and books that keep kids entertained.

As part of the Louisville Trauma Resilient Communities Healing Project, funds support La Casita's efforts to: establish a low-barrier procedure for identifying and referring Latinx children and families for screening and assessment for trauma-informed behavioral services at various community-based settings; utilize CBPR to develop a culturally specific intervention designed for Latinx and immigrant youth; and provide trauma-informed training and coaching to first responders and clinicians to mitigate the impact of secondary trauma.

League Pro, Inc.

The League Pro is a 509(a)2 non-profit with a focus on after school programming centered on debate and spoken word. Founders of The League Pro, who are both JCPS teachers, believe debate and spoken word are key to strengthening social-emotional intelligence. Program curriculum incorporates violence prevention theories revolving around using one's voice and the art of debate to resolve conflict peacefully. Funds support building organizational and programmatic capacity.

Funds also support various agency programs implemented across multiple Louisville community centers as part of an extended-hours summer programming initiative.

Lighthouse Promise, Inc. d/b/a Lighthouse Academy at Newburg

Lighthouse Academy at Newburg provides youth a safe place to learn and grow through educational, spiritual, and economic programs. They provide a free after school program for elementary and middle school students from the Newburg area. They focus on homework completion, reading, and math tutoring. Funds support the Partners in Learning program.



ORGANIZATIONS FUNDED BY MAYOR GREENBERG'S ADMINISTRATION

Living Motivation, Inc.

The purpose of the company is to help people in underserved communities to have a fair chance to achieve success in life. Funds support the Newburg Youth Physical Activity Club.

Longs Tutoring and NTI Program

This organization's mission is to provide a safe learning environment and provide quality, tailored tutoring services. They provide individual and small group tutoring sessions. Funds support various programs implemented across multiple Louisville community centers as part of an extended-hours summer programming initiative.

Looking for Lilith

Looking for Lilith is a professional theatre ensemble that specializes in lifting unheard voices through performance and using dramatic play in educational settings. They seek to build a community of girls/youth based on mutual respect and positive communication and collaboration, to provide a safe space where participants can be themselves, discover and explore their identity and find a sense of belonging that promotes healing and wellbeing, and to increase self-esteem as well as the communication, collaboration, and creative critical thinking skills of all involved in the program through the process of producing their own play. Funds support the Girl-Speak/Youth-Speak programs.

Louisville Community Center

LCCC offers a variety of programs and services in support of children and families. Arts education, after-school programs, employment services, job training, financial education, and home ownership are just some of the services provided. Funds support the Teen Leadership Council. Funds also provide programmatic support.

Louisville Folk School

Louisville Folk School is a 501C3 nonprofit with a mission to engage the folk music traditions of Kentuckians through education and performance, and build on the rich cultural history of the bluegrass state, while creating community through the arts. Funds support various programs implemented across multiple Louisville community centers as part of an extended-hours summer programming initiative.



ORGANIZATIONS FUNDED BY MAYOR GREENBERG'S ADMINISTRATION

Louisville Nature Center

Funds support the Center's engaging Youth Program, which provides out-of-school opportunities for underserved youth in the outdoors, with adult mentors. The program includes a summer nature day camp as well as weekend activities.

Louisville Soccer Foundation d/b/a LouCity and Racing Foundation

The Foundation's signature program is designed to introduce the game of soccer and provide life skills through the club's value model, P.I.T.C.H. In collaboration with youth service providers, the program aims to improve physical and mental health, educational achievement, and personal confidence. Funds provide programmatic support.

Louisville Urban League

The National Urban League works to provide economic empowerment, educational opportunities, and the guarantee of civil rights for the underserved in America. Funds support the Pathways to Success program which consists of three components: Street Academy, Parent Engagement and Project Ready.

Funds also support the Reily Reentry Project, which facilitates and funds the expungement process. In exchange, participants are asked to enroll in any League program that will equip them with the tools they need to be more successful as they move into more prosperous futures.

Funds also support the Louisville Youth Network, a free, one-stop shop for sharing what services and programs are available to Louisville's youth (ages 16-24) who are not in school, not working, or simply need support. Through the Network, youth have the opportunity to receive wraparound services, support, and mentorship from a collaboration of multiple partners to include Goodwill Industries of Kentucky, Louisville Urban League, and the Coalition Supporting Young Adults.

Funds also support the Youth Intervention Program. Through targeted case management and comprehensive youth development, the program aims to empower justice involved youth, fostering personal growth and equipping participants with the skills and resources necessary to make positive choices.



ORGANIZATIONS FUNDED BY MAYOR GREENBERG'S ADMINISTRATION

Louisville Youth Philanthropy Council

LYPC is a youth leadership development program that harnesses the power of philanthropy to equip young people with the skills and resources they need to make a positive impact in their communities. The program uses a hands-on learning approach to cultivate the next generation of compassionate and socially conscious leaders. Funds provide programmatic support.

LUCE, Inc.

LUCE's program focuses on providing comprehensive educational and training services to children, adolescents and young adults within the Hispanic community. It is designed to engage participants in activities that prevent gun violence, enhance community resilience, and foster healthy relationships. Funds provide programmatic support.

Martin & Muir

Martin and Muir counseling help families and individuals find their authentic selves by providing wraparound behavioral health services focused on social, emotional, and behavioral development while growing wellness within individuals, families, and the community. Funds support counseling and suicide prevention programming for Black and Brown men and boys.

Maryhurst

Funds support Maryhurst's involvement at Goodwill's The Spot. Maryhurst provides staff with mental health training and support to provide their services with a trauma-informed philosophy. Direct counseling services are provided to students at The Spot. The partnership with The Spot and Maryhurst's Renewal Behavioral Health program provides the unique coordination of services for mental health, career development, and case management to support participants on their journey to health and success.

Funds also support Maryhurst's work with survivors of gun violence. They provide peer support and connect them to essential community resources through Peer Navigators.

As part of the Trauma Resilient Communities Expansion Project, funds also support Maryhurst's trauma-informed care and community-based behavioral health care for young people and families who have trauma-related challenges including drug and alcohol abuse, gun violence and adverse social determinants of health.



ORGANIZATIONS FUNDED BY MAYOR GREENBERG'S ADMINISTRATION

Metro United Way

Metro United Way is prioritizing educational attainment for school-aged youth by focusing on three sectors: school, home, and community. They employ innovative tools and strategies that rely heavily on cross-sector partnerships to build healthy systems of support for youth and their families. Funds support Youth Services programming and coordination.

Funds also support Metro United Way's participation in the development of the Social Justice Youth Development Certificate Program. The program administers a comprehensive training program to youth development professionals and organizations.

Funds also support increasing access to the Youth Success Network, increasing capacity of organizations in the Youth Success Network, and strengthening the network's ability to equitably serve youth and families, as well as connecting youth and families to supportive services.

Funds also support the Bridgeway Tutoring program that bridges the gaps in learning for youth in out-of-school time programs.

Funds also support the Young Men United project.

Molo Village CDC

MOLO's mission is to transform, empower, and renew lives through education, community service, advocacy, and healthy living. Funds support various agency programs implemented across multiple Louisville community centers as part of an extended-hours summer programming initiative.

Funds also support creating equitable opportunities for Russell children and youth to thrive and succeed in life by building their awareness, knowledge, experience, and character, enriched within a cultural context.

Funds also support the organization's signature program, Be Your Own Leader (BYOL) After-School Tutoring and Summer Enrichment Program, which offers personalized academic support and Black cultural studies for K-5 students in the Russell community. The programs provide certified staff and relationship teaching that is needed to reach academic milestones required for success in school.

More Than A Smile Foundation

This agency's mission is to empower minority, immigrant, and refugee communities to overcome systemic challenges and thrive through mentoring, women empowerment, and community engagement. Funds provide programmatic support.



ORGANIZATIONS FUNDED BY MAYOR GREENBERG'S ADMINISTRATION

Mothers of Murdered Sons and Daughters of Kentucky, Inc. (M.O.M.S.)

M.O.M.S. is a grief support group for loved ones who need a way to cope with loss after gun violence in Louisville. Funds support building operational and programmatic capacity.

NAMI Louisville, Inc.

As part of the Trauma Resilient Communities Expansion Project, funds support NAMI's efforts to provide content, marketing materials, and subject matter expertise for a mental health stigma campaign to strengthen the trust within the community, continue the necessary conversation surrounding mental health, and prompt organizations city-wide to take steps toward a more collaborative effort in reducing stigma that makes it difficult for people to seek mental health support and treatment.

Funds also support the Louisville Youth Mental Health Bus, which offers access to social-emotional learning and mental health programming to underserved youth, provides prevention and intervention services to school-aged youth in a comprehensive and engaging environment, and increases community awareness of mental health wellness resources focused on post-traumatic growth objectives.

Nativity Academy at St. Boniface School

Funds support the Graduate Support Program. Its goal is to holistically support the evolving academic, emotional, social and physical needs of middle school students, alumni, and their families so they can succeed in high school and beyond. Participants receive support starting in sixth grade and continue through post-secondary and vocational opportunities to ensure student aspirations are achieved.

Neighborhood House, Inc.

Neighborhood House has called the Portland area home for over 60 years. Neighborhood House provides a safe and supportive place for infants, kids, families, and seniors to connect with one another. Today, their mission, vision, and values reflect their hope for an equitable future. Funds support the Youth Development Program providing a variety of supports activities for youth.

Funds also support the Neighborhood House Neighbor Nites program.



ORGANIZATIONS FUNDED BY MAYOR GREENBERG'S ADMINISTRATION

NOIR Black Chamber of Commerce, Inc.

The Chamber provides early business education, professional skills training, and Black community trauma education, and connects youth to internships, job training, apprenticeship programs, mentoring, and more, with the goal of increasing the number of successful Black entrepreneurs, skilled workers, and corporate professionals over time. The Chamber's goal is to yield increases in higher achievements, accolades, professional success, reduction in poverty, and long-term social and economic mobility for Black people ages 9-24. Funds support building operational and programmatic capacity.

One Plus One Equals U, Inc.

One Plus One Equals U, Inc. serves to impact the lives of teens and young adults by way of high school completion and post-secondary education attainment. Funds support building operational and programmatic capacity.

Option to Success, Inc.

Option to Success's program empowers clients to explore creativity as a therapeutic process and medium that integrates the world of psychotherapy and art. This program promotes emotional, mental, and developmental growth by providing the client a safe space for artistic expression through different artistic genres. It serves women, teens, adolescent girls, and their fathers. Funds support building operational and programmatic capacity.

Peace Education Program

The Peace Education Program strengthens communities and schools by training youth and adults to build and sustain positive relationships. They do this by providing learning experiences to reduce violence, enhance personal integrity and foster mutual respect. They teach conflict resolution, peer mediation and prejudice reduction. Funds support Violence Prevention and Prejudice Reduction programs for youth.

Perform to Perfection Academy

The mission of P2P Academy is to turn dreams into reality by helping students prepare themselves academically and physically. For many student athletes today, being prepared both on and off the field is the biggest challenge. P2P Academy removes any obstacles that might prevent the next generation from succeeding in the classroom or on the playing field. Funds support building operational and programmatic capacity.



ORGANIZATIONS FUNDED BY MAYOR GREENBERG'S ADMINISTRATION

Play Cousins Collective

Play Cousins Collective's mission is to create a nurturing and empowering environment for Black children and families in West Louisville, where everyone is supported and valued. Funds support Youth Enrichment programs, like the Mizizi After School Program and Playful Pathways. They don't just provide tutoring; they offer a space where children can connect with their heritage, grow in confidence, and become lifelong learners.

Portland Museum, Inc.

The Portland Museum celebrates Louisville's Portland neighborhood's rich cultural narrative through the power of art, culture, and community. It inspires creativity and neighborhood pride through engaging artistic experiences that promote exploration and play. Funds support the Portland Museum's AHOY Lighthouse Residency and Illuminating Arts & Community programs.

Presentation Academy, Inc.

Presentation Academy strives to create a diverse community that promotes academic excellence and challenges young women to develop their greatest potential. Funding supports Presentation Academy's Leadership Pathways and Summer Camp programs designed to empower youth to choose pathways that inspire them, build confidence, and help with goal setting.

Project One, Inc.

Project One, Inc. in Louisville is committed to creating impactful career opportunities for at-risk youth in the Louisville. Funds support building operational and programmatic capacity.

Power, Inc.

Power Inc. is a non-profit organization that aims to educate, empower, and equip African American men and their families by providing mental health and wellness workshops to participants and families. Funds support various agency programs implemented across multiple Louisville community centers as part of an extended-hours summer programming initiative.



ORGANIZATIONS FUNDED BY MAYOR GREENBERG'S ADMINISTRATION

Prominent Youth of America

Prominent Youth of America (PYOA) is a Black-led 501(c)3 nonprofit organization dedicated to promoting entrepreneurship within the music & entertainment industry. PYOA is committed to achieving social change through the following principles: Education, Integrity, Leadership, Technology & Innovations. PYOA exists to ensure families have equitable access to enrichment opportunities for their children's academic success and social, mental, and emotional health. Funds support organizational and programmatic growth.

Funds also support the Arts of Music Education, a comprehensive program aimed at nurturing youth talents, enhancing their skills, and fostering their entrepreneurial spirit to become valuable contributors to society. The curriculum for youth is thoughtfully crafted to captivate participants, fostering their growth in song writing, technology, audio production, graphic design, core DJ principles, and performing arts, as well as advertising, marketing and promotion.

Pushing Forward, Inc.

Pushing Forward's Thrive program gives direct support to survivors of gun violence that have been diagnosed with a spinal cord injury. Funds support this effort.

Reviving Urban Neighborhoods, Inc.

Reviving Urban Neighborhoods' mission is to bridge the gap between the community, its resources, and opportunities. They accomplish this through sports and entertainment, and collaboration within and throughout the community. R.U.N. uses programs and events designed to attract the target demographic and educate and inform them on steps and resources needed to be successful and productive citizens. Funds support building operational and programmatic capacity

Robert Jamison Ministries

Robert Jamison Ministries' mission is helping people by teaching those less fortunate to realize their potential and understand that with the right resources their dreams can and will become a reality. They provide resources and services based on the needs of individuals and families. Funds support building operational and programmatic capacity.

Funds also support the Blight to Plenty Program which hires working-age youth and young adults within the Shawnee neighborhood who are at risk of being a victim or perpetrator of gun violence. Participants learn about urban



ORGANIZATIONS FUNDED BY MAYOR GREENBERG'S ADMINISTRATION

agriculture, XR technology, volunteerism and civic engagement. Participants learn skills for violence prevention and intervention to include conflict resolution, social-emotional intelligence, and Stop the Bleed.

Funds also support Project Inspire Academy, which provides impactful and transformative academic and social activities.

Roots 101 African American Museum

Funds support education services. Emerging Generations Z&A: The Youth Development Phenomenon explores the impact of mentorship, while advancing course curriculum that is culturally sustaining to students of color. The curriculum highlights four pillars for student success and personal and social development: Identify and Self-Discovery, Entertainment, Social Entrepreneurship and Life Skills.

See Forward Ministries Corporation

As part of the Louisville Trauma Resilient Communities Healing Project, funds support this agency's efforts to establish a low-barrier procedure for identifying and referring west/east African youth and families for screening and assessment for trauma-informed behavioral services at various community-based settings; provide services; and adapt and develop a curriculum to train clinicians on how to effectively work with west/east African clients.

Seven Counties

Funds support Family Recovery Court (FRC), a voluntary program designed to work with families who struggle with substance use and are involved with the child welfare system. The mission of the program is to ensure that parents who enter FRC transform into responsible caregivers with the resources to provide safe, stable homes for their children.

Funds also support Seven Counties' efforts to provide racially, ethically, and culturally inclusive, trauma focused services to children & families and to train clinicians in Trauma Specific Evidenced Based Interventions (e.g. AF-CBT, RTT) with a focus on Black and Brown clinicians.



ORGANIZATIONS FUNDED BY MAYOR GREENBERG'S ADMINISTRATION

Society for the Prevention of Aggressiveness & Violence Amongst Adolescents

SPAVA is dedicated to producing a nonviolent society by being mentors and role models for youth. SPAVA's mission is to help young people avoid the negative outcomes produced by aggressive behavior and violence. SPAVA believes that teaching young people the right skills will give them the confidence, knowledge, and tools to make healthy decisions and stand up against negative influences. SPAVA serves students Pre-K through 12th grade. Adult volunteer mentors follow a pre-planned curriculum in which alternatives to violence are discussed. Students learn skills centered around anger control and discover how controlled aggression (assertiveness) can be beneficial. Funds are provided to build organizational and programmatic capacity.

Society of St. Vincent DePaul, Inc.

St. Vincent dePaul Louisville serves individuals and families in need including those who are homeless, living in poverty, suffering from addiction, enduring mental illness, or experiencing acute economic crisis. The Family Success Center supports families and youth by enriching their family life. It provides year-round educational and social development opportunities for children. This includes after-school and summer programming to elementary and middle school students. The FSC serves children who live on campus and those in the neighboring Smoketown and Shelby Park areas. Funding supports after-school and summer programs.

Somali Community of Louisville, Inc.

Through support services, Somali Community seeks to erase the educational achievement gap for Somali youth, improve the self-worth and esteem of youth who are facing challenges with navigating a new culture and increase the number Somali youth who graduate from high school and are prepared for college. Funds support Mentors & Meals, which aims to enhance academic achievement through mentoring. Mentors & Meals provides school aged youth with free homework help, hot meals, and structured group activities designed to enhance academic achievement and social development.

As part of the Louisville Trauma Resilient Communities Healing Project, funds also support the agency's efforts to establish a low-barrier procedure for identifying and referring Somali youth and families for screening and assessment for trauma-informed behavioral health services at various community settings; provide culturally specific, trauma-informed behavioral health services for Somali youth and families; and adapt and develop a curriculum to train clinicians on how to effectively work with Somali clients.



ORGANIZATIONS FUNDED BY MAYOR GREENBERG'S ADMINISTRATION

SOS International

SOS is a Louisville-based nonprofit organization that meets critical health care needs in medically impoverished communities around the world. SOS works directly with youth to prepare them for the transition to independence through a special focus on youth empowerment. Funds support the Youth Education and Empowerment Program.

Since 2019, SOS has provided hands on learning tools to the Career Pathways program at JCPS, with the primary focus on the Health Sciences track. Funds also support the extension of this program to 17 schools.

Sowing Seeds with Faith

Through tutoring, mentoring and summer enrichment camps, their mission is to engage youth academically and socially in Louisville in mastering developmental challenges via educational expectations, structure, faith, and accountability. Funds support various agency programs implemented across multiple Louisville community centers as part of an extended-hours summer programming initiative.

Funds also support the Success University Comprehensive Youth and Parent Services.

Spalding University

Funds support the university's provision of supervision and clinical training for Collective Care Center clinicians of color in racial therapy and assessment, and provide micro-level individual therapy in AF-CBT and RTT to community project participants.

As part of the Louisville Trauma Resilient Communities Healing Project, funds also support the university's efforts to establish a low-barrier procedure for identifying and referring Louisville youth and families for screening and assessment for trauma-informed behavioral health services at various community settings; provide culturally specific, trauma-informed behavioral health services in community-based settings in Metro Louisville (Kniffley Racial Trauma Therapy (KRTT) individual and group therapy); and adopt and develop the MIST curriculum for work with Black and Latinx clinicians who provide KRTT model in Metro Louisville.



ORGANIZATIONS FUNDED BY MAYOR GREENBERG'S ADMINISTRATION

St. Joseph's Orphans Society d/b/a St. Joseph's Children's Home

St. Joe's serves approximately 1,500 children and families annually across three core programs: residential treatment, foster care and adoption, and child development. St. Joe's provides intensive therapy, safety, education, and care to our most vulnerable children. St. Joe's also create families for children in need of foster care and adoption throughout Kentucky. Funds support the Residential Treatment Program. SJCH provides a safe and therapeutic home for up to 48 children at any given time. Children live there for an average of 1.5 years with the goal of transitioning to a home environment. Youth receive intensive therapeutic support including individual and group therapy, life skills, education, medical, and daily living support to recover from their individual past traumas.

St. George's Scholar Institute

St. George's Scholar Institute is a youth development agency that provides quality, out-of-school programming for social, emotional and academic learning for vulnerable youth in the California and surrounding neighborhoods. Its mission is to Embrace, Educate and Empower youth in Louisville. Funds support various agency programs implemented across multiple Louisville community centers as part of an extended-hours summer programming initiative.

Funds also support St. George's College & Career Readiness program. There is a specific focus on leadership, empowerment, financial literacy, public speaking, health & wellness, and fostering teamwork. This provides exposure to colleges through tours, events, and assistance in finding scholarship opportunities. This program is open to both middle and high school students.

Funds also support the Possibility Campus, which delivers college and career readiness programming to middle and high school aged youth two times a week for 36 weeks to include virtual and/or on-campus college visits, assistance with FASFA, scholarship and financial aid applications.

Super Student Athletes

This organization's mission is to identify and leverage the principles of sport, creating a playbook to the ultimate game called life. SSA students achieve, one pillar at a time: financial literacy, communication skills, mental health, and community service activity and appreciation. Funds support building operational and programmatic capacity.



ORGANIZATIONS FUNDED BY MAYOR GREENBERG'S ADMINISTRATION

Tech at Nite, LLC

Tech at Nite's mission is to upskill economically disadvantaged communities through technical and trade-based skills training, workshops, job placement, and career path guidance. Funds support a 10-week summer program with a focus on social cohesion, mental health, and conflict resolution as it pertains to gun violence for at-risk youth and young adults in the Russell neighborhood.

TECH-Nique, Inc.

TECH-Nique's mission is to provide community-centric opportunities in technology that elevate the voices and experiences of underrepresented groups. TECH-Nique equips participants not just to be consumers of technology, but also game-changing creators and leaders in the field. Funds support various agency programs implemented across multiple Louisville community centers as part of an extended-hours summer programming initiative.

Funds also support the TechRoots program.

Tiger Strike Martial Arts Academy, Inc.

Tiger Strike is a youth leadership and martial arts academy. Funds support building operational and programmatic capacity.

Tip It Forward

As part of the Trauma Resilient Communities Expansion Project, funds support the Holistic Care Kit Training for Stress Relief and Mental Wellbeing to include a train-the-trainer module, evaluation and certification, and holistic care kits to be distributed to participants and community members.

United Crescent Hills Ministry

Funds support UCHM's United Learning Youth program, which provides quality out-of-school programming for elementary and middle school students in Jefferson County. The program comprises two main activities: The United Learning Afterschool Program and the United Learning Summer Camp program.



ORGANIZATIONS FUNDED BY MAYOR GREENBERG'S ADMINISTRATION

University of Louisville Research Foundation

Funds support the Trauma Resilient Communities Expansion Project. For all expansion projects, the University conducts evaluations and assessments to show how the implemented programs effectively reduce violence and improve community engagement; demonstrate the integration of trauma-informed behavioral health services with other community systems to address social determinants of health; and provide evidence of positive changes in community well-being and resilience as results of the programs.

Funds also support the Youth Advisory Board – Center for Social Justice Development Research Center. Participants engage in weekly, in person, critical consciousness building sessions that aim to cultivate youth-led and supported transformational change within systems that often cause harm to youth from systemically underinvested areas and backgrounds. Youth engage in a youth-led social change project.

University of Louisville School of Public Health and Information Sciences

Funds support the partnership between University of Louisville Center for Social Justice Youth Development Research led by Dr. Brown and the Office of Violence Prevention's Youth Engagement Services to increase professional development opportunities and support for the youth development workforce in Louisville through the creation and implementation of the Social Justice Youth Development Certificate program.

University of Pittsburgh

Funds support the University of Pittsburgh School of Medicine, as part of the Louisville Trauma Resilient Communities Project, to help increase communities' capacity in trauma-informed care, resources, and equity for youth and their families living in West and South Louisville, by training local master-level clinicians in Alternative for Families Cognitive Behavioral Therapy. This is a trauma-informed, evidence-based treatment designed to improve relationships between children and caregivers in families involved in conflict, physical aggression, child physical abuse, and/or child problem behaviors.



ORGANIZATIONS FUNDED BY MAYOR GREENBERG'S ADMINISTRATION

University Medical Center d/b/a University of Louisville Hospital

Funds support the Hospital Violence Intervention Program (HVIP). As Part of Louisville's Pivot to Peace Initiative, HVIP provides an opportunity for trained community health workers to meet with gunshot patients while they are in the hospital to begin building relationships with them, connecting them with wraparound services, and preventing them from retaliating against anyone who may have played a part in their injuries.

Funds also support victims of gun violence through the Trauma Institute's Art Therapy program. Art therapy is an expressive therapy that facilitates the therapeutic process through artmaking. Creating art engages parts of the brain where trauma is stored and provides an expressive outlet for patients experiencing a range of presenting problems due to their traumatic experiences.

Urban Barbers of Louisville

Funds support the Thoughts Out Loud Mental Health & Violence Prevention Barber Shop program, where youth are provided a positive outlet for processing their emotions and life circumstances. Through the primary goal of supporting Mental Health and curbing Community violence, the program brings Hip Hop to teach positive lyrical expression - all while barbering.

Volunteers of America Mid-States (VOA)

Funds support VOA's partnership with Louisville's Pivot to Peace Initiative, where VOA provides support services for high-risk individuals engaged through the Pivot to Peace Community Violence Intervention program sites, as well as support to gun violence victims.

Funds also support the Juvenile Justice Restorative Justice (RJ) program. RJ provides a holistic and comprehensive approach to the traditional criminal justice system by bringing together the offender, victim, and community to make things right. Through facilitated conferences, parties collectively identify the harm and determine a solution-based resolution. The restorative justice approach ensures that restitution and compassion are integral parts of the judicial process.

Funds also support the Restorative Justice Program Expansion into the adult criminal justice system.



ORGANIZATIONS FUNDED BY MAYOR GREENBERG'S ADMINISTRATION

Wesley House Community Services, Inc.

Wesley House offers a range of programs that empower families and individuals along the Preston corridor. The programs are designed to provide quality education, enrichment, and empowerment opportunities for children, youth, and adults. The programs are aligned with the agency's vision to be a leading family services community center and advocate for equity for Black, Indigenous and People of Color. Funds support the Reading Under Nine program that aims to strengthen youth literacy and academic and social well-being.

West Louisville Math and Science Project, Inc.

The mission of the West Louisville Math and Science Project is to build math, science and literacy skills among children within the African Diaspora and their families. Providing a space for families to learn together, with cultural relevance, is a vital component of strengthening relationships and transforming communities. This work is done primarily through hosting community events and conducting workshops for families and with groups who work with children. Funds support building operational and programmatic capacity.

Whitney Strong, Inc.

Funds support Save A Life, which offers evidence-based trainings that can make communities safer now. Through the W/S Rules of Firearm Safety, STOP THE BLEED®, and suicide prevention curricula like Question, Persuade, Refer and Sources of Strength, the organization seeks to reduce gun violence and its impact.

Willenium Enterprise Foundation, Inc.

The organization's mission is to provide equitable services to families that need sustainable careers, education, mental health, youth prevention, childcare, expungement, and wealth building assistance. Funds support various agency programs implemented across multiple Louisville community centers as part of an extended-hours summer programming initiative and summer youth recreation programs.



ORGANIZATIONS FUNDED BY MAYOR GREENBERG'S ADMINISTRATION

YMCA of Greater Louisville, Inc.

Funds support the Black Achiever's Program, which provides a continuum of structured programs and community events offered to youth, teens, and young adults. The program is offered during the 40-week school year and provides a variety of discussions and interactive activities that promote positive youth development while building trusting relationships with adult mentors.

Funds also support the Y-NOW Mentoring program, an intensive, 10-month, curriculum-based intervention provided to students ages 11-15 who have one or both parents currently or previously incarcerated. The program promotes positive social attitudes and trusting relationships.

Funds also support YMCA Safe Place Services, which is committed to making the community stronger by providing help, hope, and healing to teens and families in crisis, including homeless youth and those in need of a youth crisis shelter.

Funds also support the New American Welcome Center, which is committed to offering immigrants the integration services and opportunities needed to be self-reliant, connected and contributing members of the Louisville community. Key areas of service include language and education; health and wellbeing; citizenship and civic engagement; economic integration and employment; and community development. The New American Welcome Center is based at the Chestnut Street Family YMCA and Southeast Family YMCA.

Funds also support the Safety Around Water program, designed to provide access to pools and basic swimming skills and water safety for children who do not have access to swim lessons during the summer months, with an emphasis on training Louisville youth to become lifeguards.

Funds also support the YMCA's Youth Fitness Fundamentals program, which is designed to support teens in living a healthy, active life. The program introduces concepts focused on nutrition and exercise through online and hands-on training.

Young Adult Development in Action dba YouthBuild Louisville

YouthBuild Louisville's mission is to help young adults create productive, sustainable lives, and this center is the living embodiment of that commitment. Funds support the Urban Conservation Corps program that engages youth in meaningful urban service projects while building workforce skills in the Green Jobs sector.

Funds also support other workforce and career development programs.



ORGANIZATIONS FUNDED BY MAYOR GREENBERG'S ADMINISTRATION

Young Authors Greenhouse, Inc.

This is a nonprofit organization in Louisville that inspires students ages 6-18 to recognize the power of their voices and stories. Youth Authors Greenhouse fulfills its mission through writing and publishing programs, creative partnerships with schools, and a community of engaged volunteers. Funds support the South Louisville Youth Voice Initiative.

Youth Golf Coalition d/b/a The First Tee of Louisville

First Tee is a youth development organization that enables kids to build the strength of character that empowers them through a lifetime of new challenges. By seamlessly integrating the game of golf with a life skills curriculum, First Tee creates active learning experiences that build inner strength, self-confidence, and resilience that kids can carry to everything they do. Funds support building operational and programmatic capacity.

Zora's Cradle

The mission of Zora's Cradle is to address the gaps in maternity health services that discriminate against individuals from lower socio-economic demographics in Kentucky and result in higher maternal and child mortality rates by providing access to financial and health supports pre- and post-pregnancy. Funds support the Sawubona! Program, which provides community violence intervention support groups to pregnant/postpartum women.
